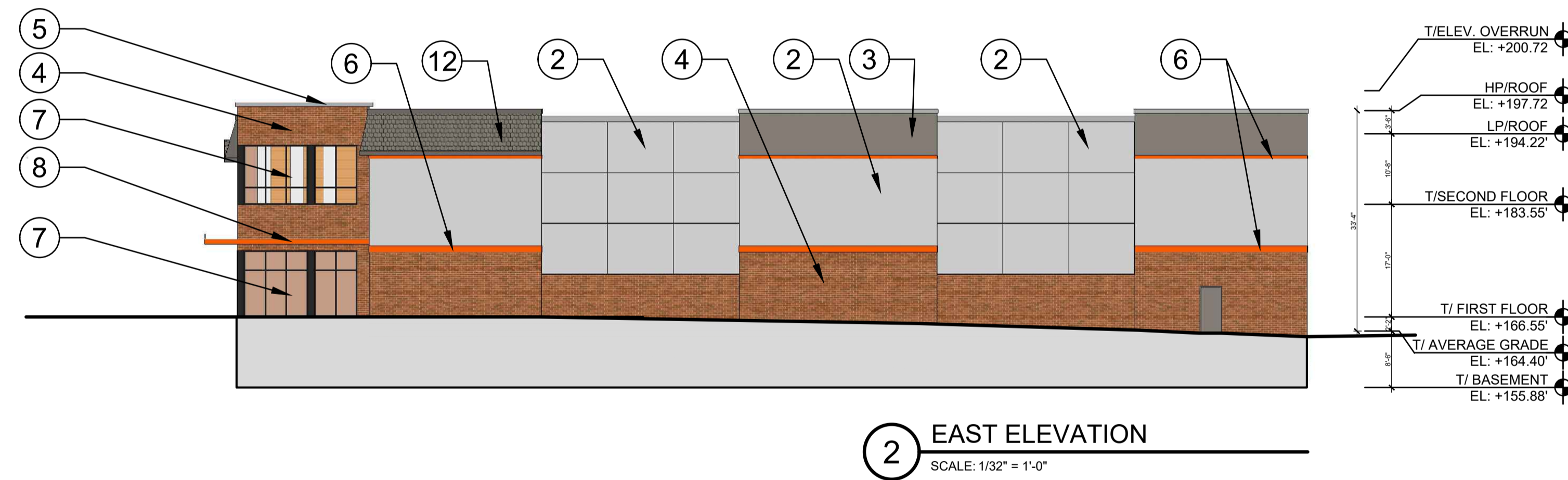


RECEIVED
JUN 26 2024
Town of Fishkill
Zoning Board of Appeals

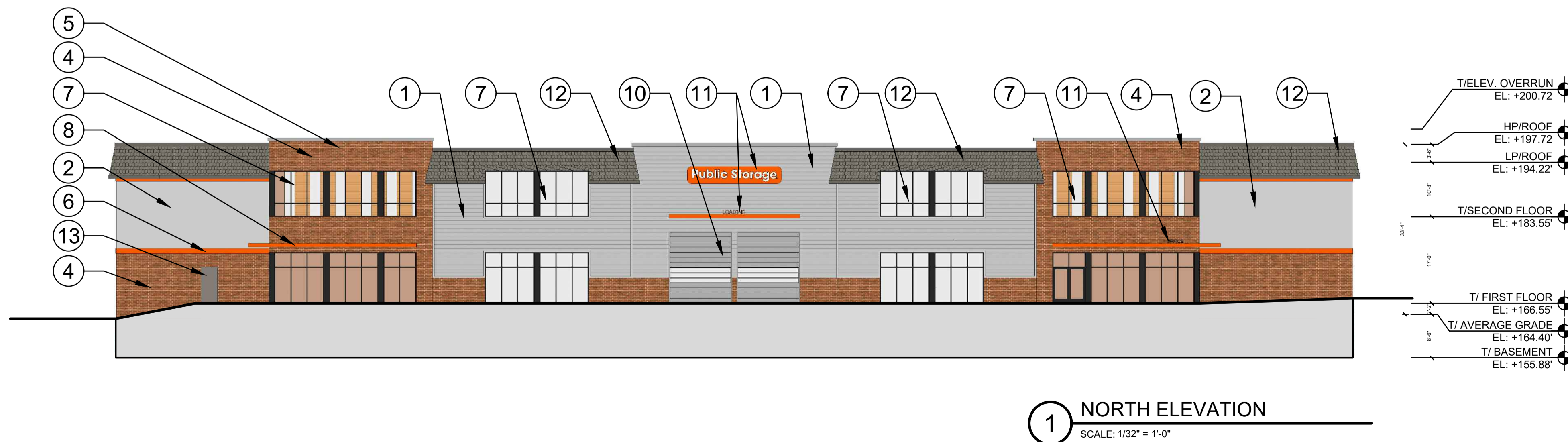
KEY NOTE MATERIAL LEGEND

NOTE: KEYED NOTES BELOW APPLY TO MULTIPLE SHEETS AND MAY NOT BE APPLICABLE TO THIS SHEET

- ① SIDING
COLOR: SHERWIN WILLIAMS "NETWORK GRAY"
- ② EIFS - 310 ESSENCE FINE SAND
COLOR: SHERWIN WILLIAMS "NETWORK GRAY"
- ③ EIFS - 310 ESSENCE FINE SAND
COLOR: SHERWIN WILLIAMS "MINERAL DEPOSIT"
- ④ UTILITY BRICK
COLOR: GLEN GERY - BROWN VELOUR
- ⑤ PRE-FINISHED ALUMINUM COPING
COLOR TO MATCH SHERWIN WILLIAMS "NETWORK GRAY"
- ⑥ PRE-FINISHED ALUMINUM BAND
COLOR TO MATCH BRANDED COLOR
- ⑦ STOREFRONT SYSTEM
COLOR: DARK BRONZE
- ⑧ PRE-FINISHED ALUMINUM METAL CANOPY - COLOR TO MATCH BRANDED COLOR
- ⑨ PRE-FINISHED ALUMINUM DOWNSPOUTS - COLOR TO MATCH SHERWIN WILLIAMS "NETWORK GRAY"
- ⑩ OVERHEAD DOOR
- ⑪ SIGNAGE
- ⑫ ASPHALT ROOF SHINGLE
- ⑬ METAL DOOR AND FRAME
COLOR: TBD

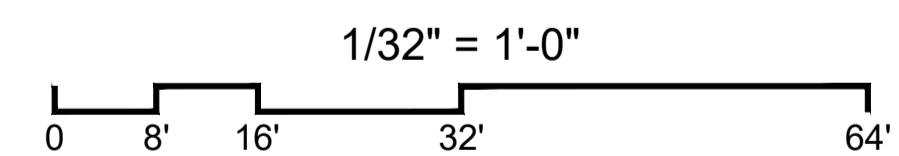


NOTE: STORAGE BUILDING SHALL BE CONSTRUCTED PER APPROVED ELEVATIONS.



ROUTE 9D

FISHKILL, NEW YORK

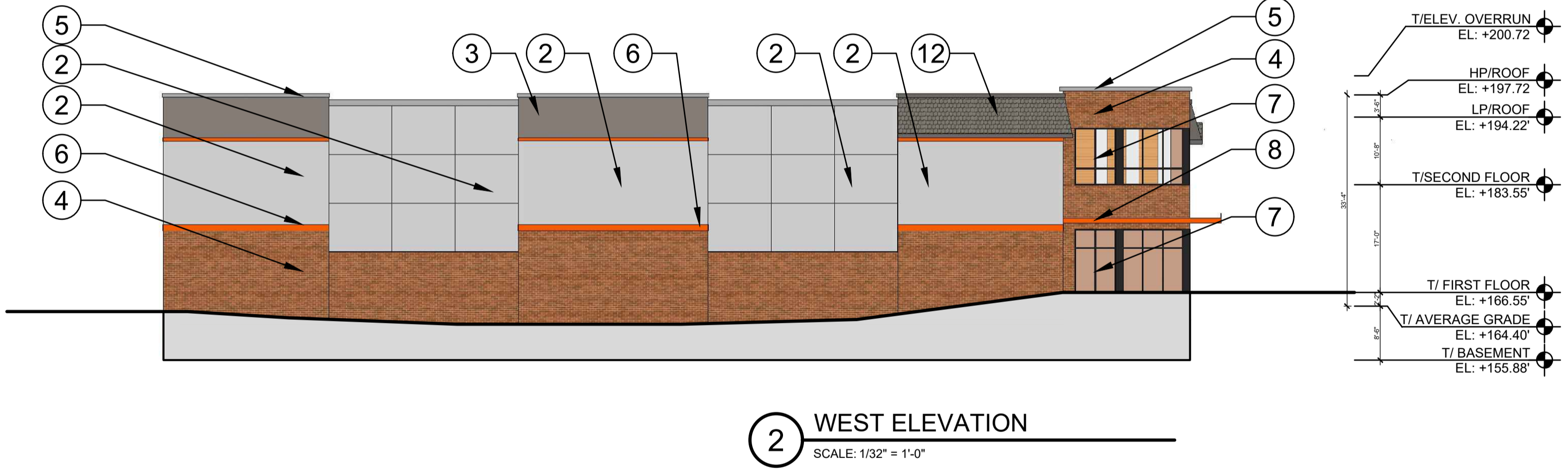


ELEVATIONS

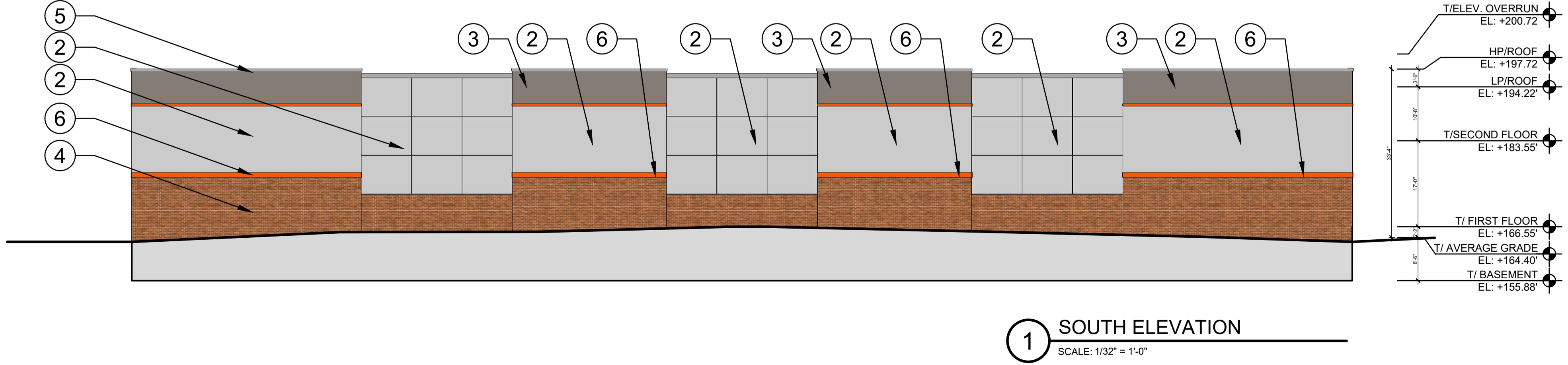
KEY NOTE MATERIAL LEGEND

NOTE: KEYED NOTES BELOW APPLY TO MULTIPLE SHEETS AND MAY NOT BE APPLICABLE TO THIS SHEET

- ① SIDING
COLOR: SHERWIN WILLIAMS "NETWORK GRAY"
- ② EIFS - 310 ESSENCE FINE SAND
COLOR: SHERWIN WILLIAMS "NETWORK GRAY"
- ③ EIFS - 310 ESSENCE FINE SAND
COLOR: SHERWIN WILLIAMS "MINERAL DEPOSIT"
- ④ UTILITY BRICK
COLOR: GLEN GERY - BROWN VELOUR
- ⑤ PRE-FINISHED ALUMINUM COPING
COLOR TO MATCH SHERWIN WILLIAMS "NETWORK GRAY"
- ⑥ PRE-FINISHED ALUMINUM BAND
COLOR TO MATCH BRANDED COLOR
- ⑦ STOREFRONT SYSTEM
COLOR: DARK BRONZE
- ⑧ PRE-FINISHED ALUMINUM METAL CANOPY - COLOR TO MATCH BRANDED COLOR
- ⑨ PRE-FINISHED ALUMINUM DOWNSPOUTS - COLOR TO MATCH SHERWIN WILLIAMS "NETWORK GRAY"
- ⑩ OVERHEAD DOOR
- ⑪ SIGNAGE
- ⑫ ASPHALT ROOF SHINGLE
- ⑬ METAL DOOR AND FRAME
COLOR: TBD

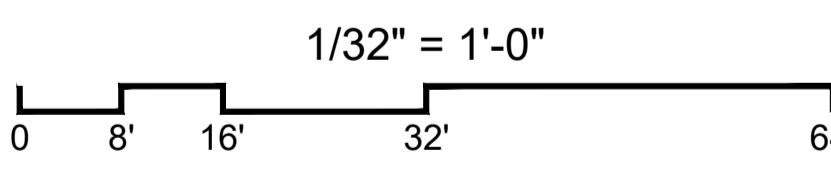


NOTE: STORAGE BUILDING SHALL BE CONSTRUCTED PER APPROVED ELEVATIONS.



ROUTE 9D

FISHKILL, NEW YORK

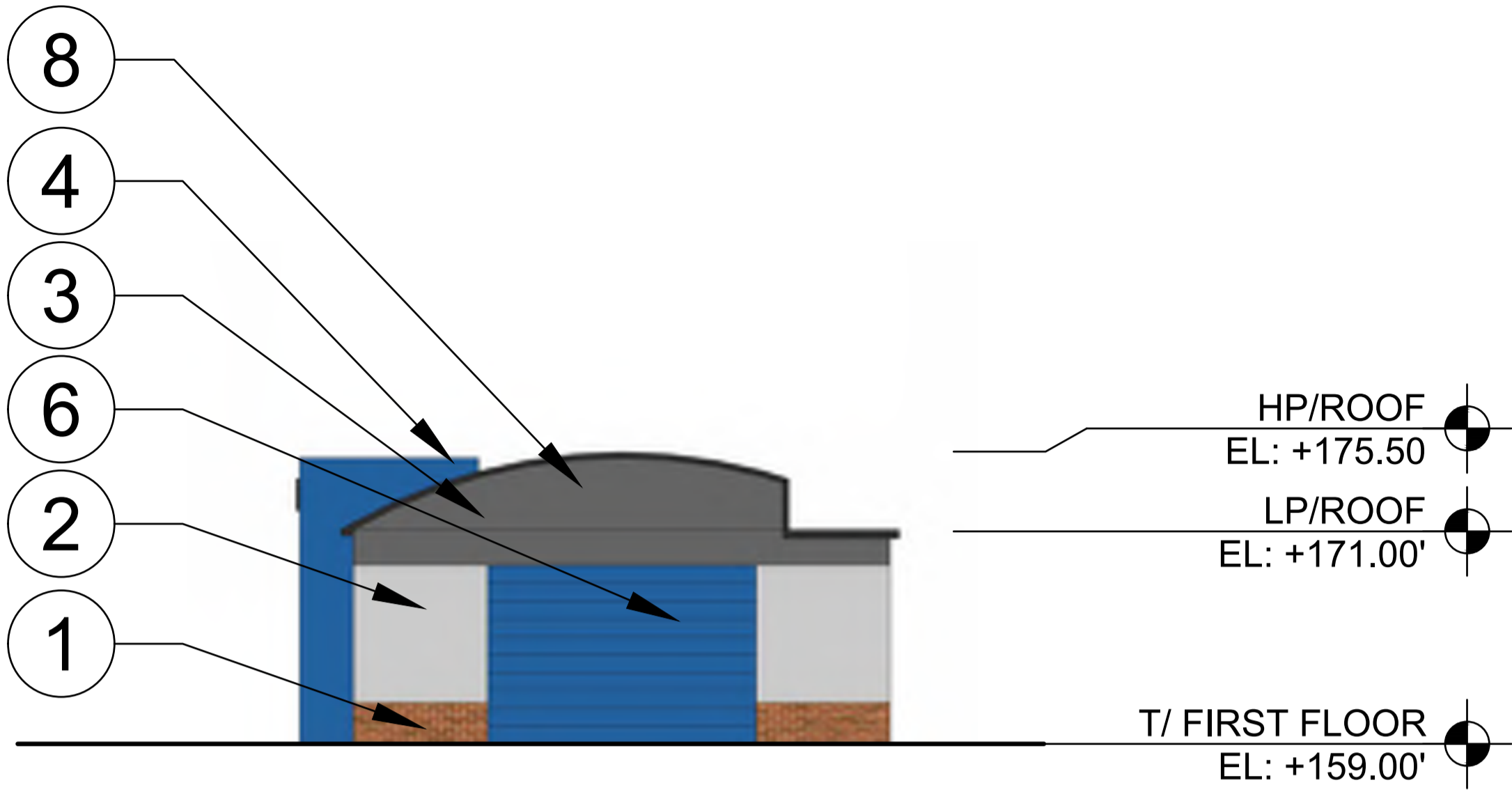


ELEVATIONS

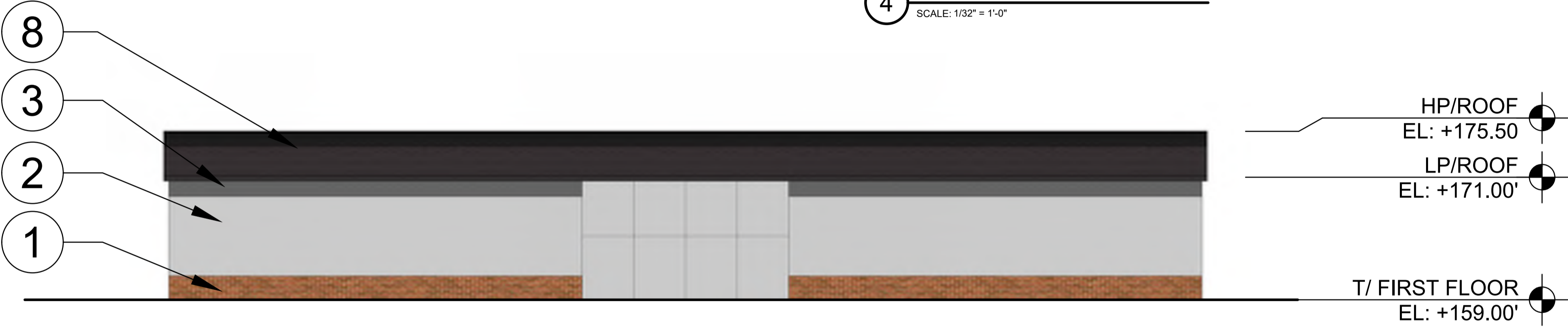
KEY NOTE MATERIAL LEGEND

NOTE: KEYED NOTES BELOW APPLY TO MULTIPLE SHEETS AND MAY NOT BE APPLICABLE TO THIS SHEET

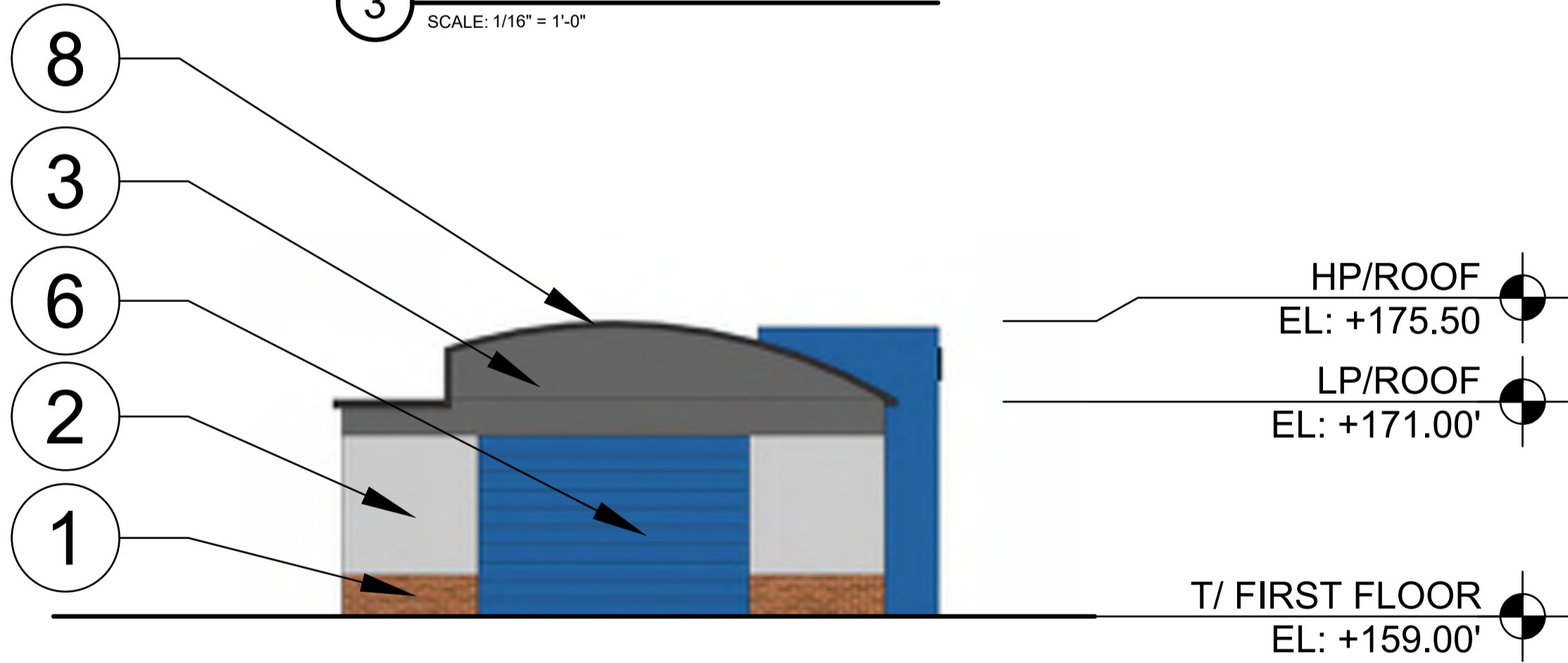
- ① UTILITY BRICK
COLOR: GLEN GERY WALNUT VELOUR
- ② EIFS - 310 ESSENCE FINE SAND
COLOR: SHERWIN WILLIAMS "NETWORK GRAY"
- ③ EIFS - 310 ESSENCE FINE SAND
COLOR: SHERWIN WILLIAMS "IRON GRAY"
- ④ EIFS - 310 ESSENCE FINE SAND
COLOR: SHERWIN WILLIAMS "ROYAL BLUE"
- ⑤ STOREFRONT SYSTEM
COLOR: DARK BRONZE
- ⑥ OVERHEAD DOOR
- ⑦ SIGNAGE (ZONING COMPLIANT)
- ⑧ METAL PANEL ROOF



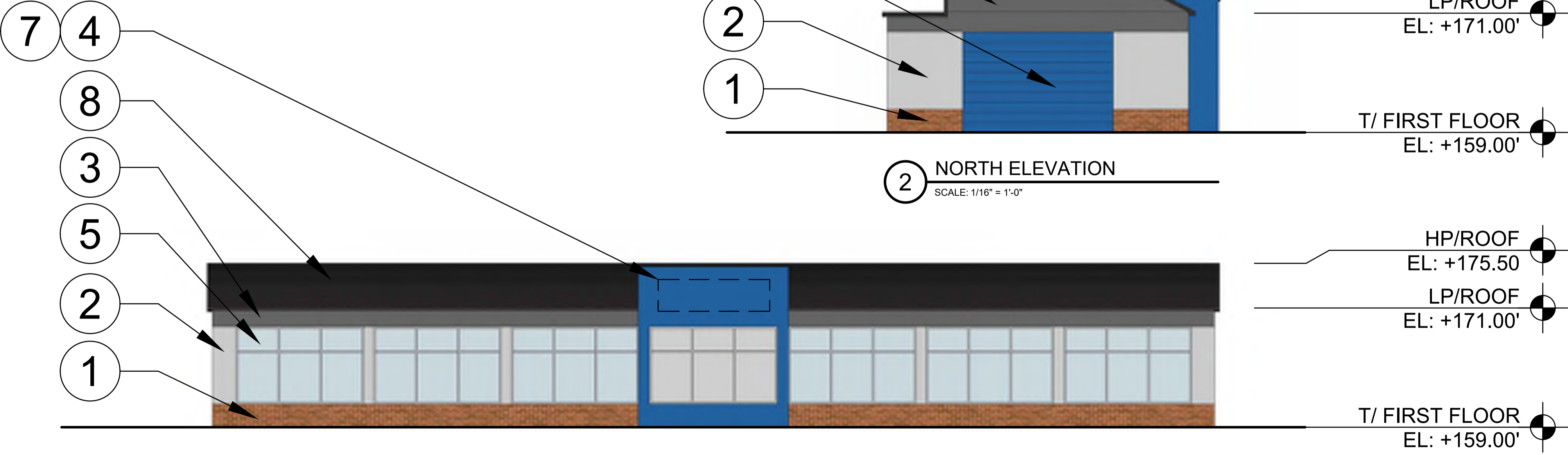
④ SOUTH ELEVATION
SCALE: 1/32" = 1'-0"



③ EAST ELEVATION
SCALE: 1/16" = 1'-0"



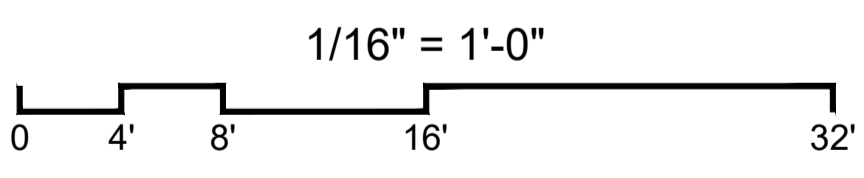
② NORTH ELEVATION
SCALE: 1/16" = 1'-0"



① WEST ELEVATION
SCALE: 1/16" = 1'-0"

ROUTE 9D

FISHKILL, NEW YORK

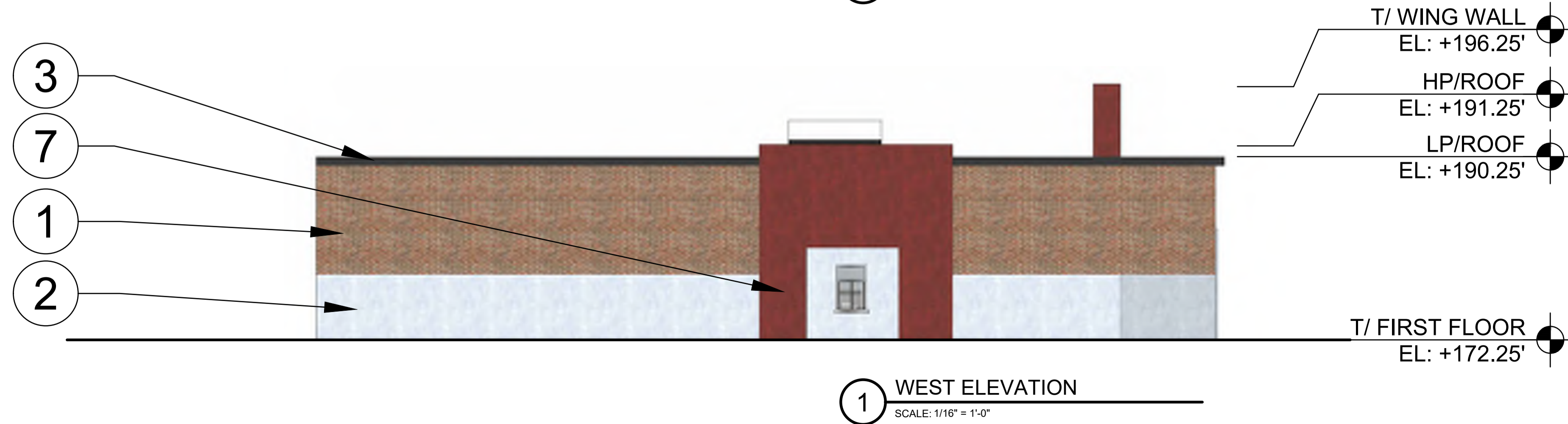
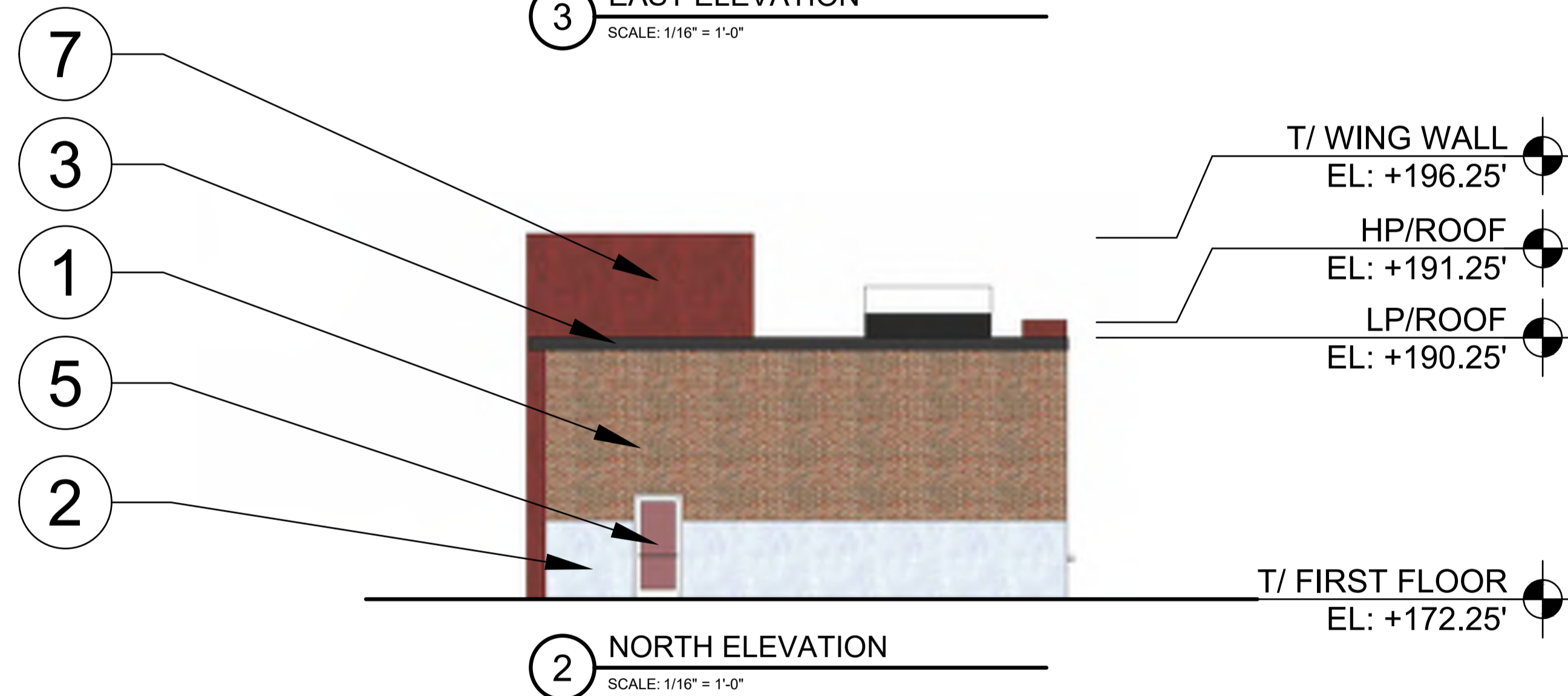
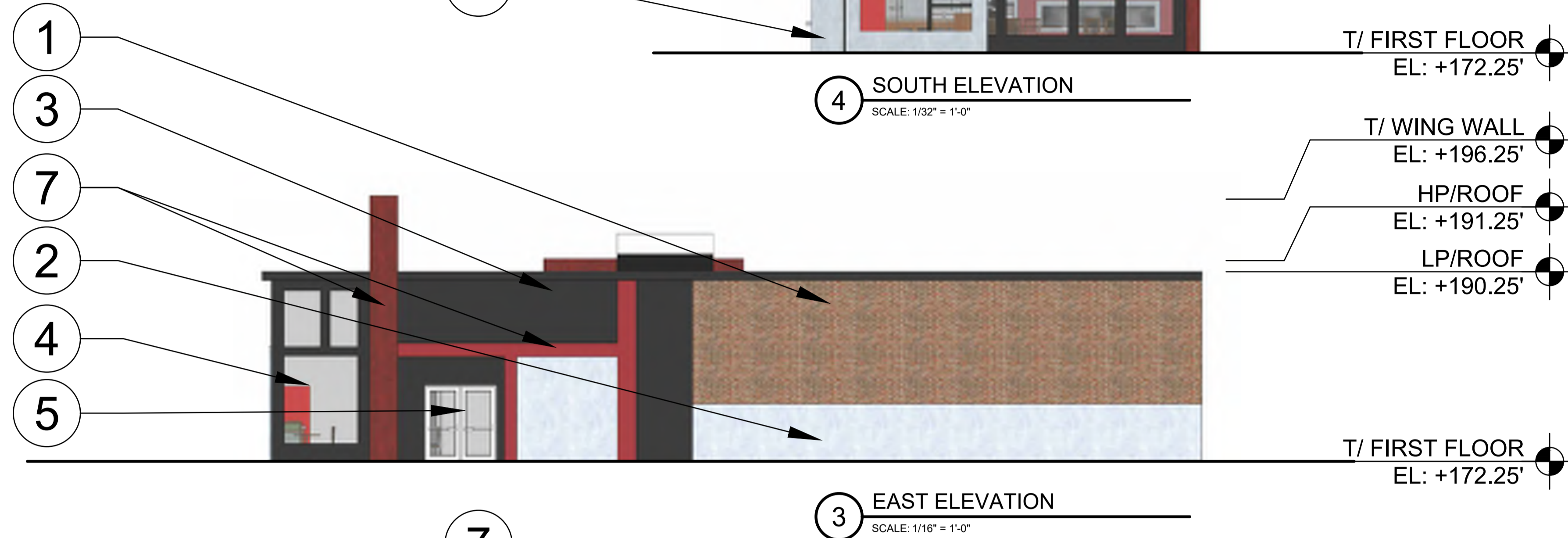


ELEVATIONS - CAR WASH

KEY NOTE MATERIAL LEGEND

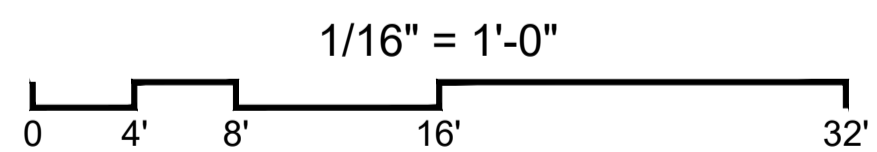
NOTE: KEYED NOTES BELOW APPLY TO MULTIPLE SHEETS AND MAY NOT BE APPLICABLE TO THIS SHEET

- ① UTILITY BRICK
COLOR: GLEN GERY WALNUT VELOUR
- ② CONCRETE - SWIRL FINISH
- ③ ARCHITECTURAL FLAT METAL PANEL
COLOR: "IRON GRAY"
- ④ STOREFRONT SYSTEM
COLOR: DARK BRONZE
- ⑤ STOREFRONT DOOR
- ⑥ SIGNAGE (ZONING COMPLIANT)
- ⑦ ARCHITECTURAL FLAT METAL PANEL
COLOR: RED



ROUTE 9D

FISHKILL, NEW YORK



ELEVATIONS - FAST FOOD RESTAURANT



ROUTE 9D

FISHKILL, NEW YORK

PERSPECTIVE



ROUTE 9D

FISHKILL, NEW YORK

PERSPECTIVE

APRIL 22, 2024

©2024 SULLIVAN GOULETTE & WILSON, LTD. / SGWARCH.COM



ROUTE 9D

FISHKILL, NEW YORK

PERSPECTIVE

APRIL 22, 2024

©2024 SULLIVAN GOULETTE & WILSON, LTD. / SGWARCH.COM



ROUTE 9D

FISHKILL, NEW YORK

PERSPECTIVE

PREPARED ESPECIALLY FOR

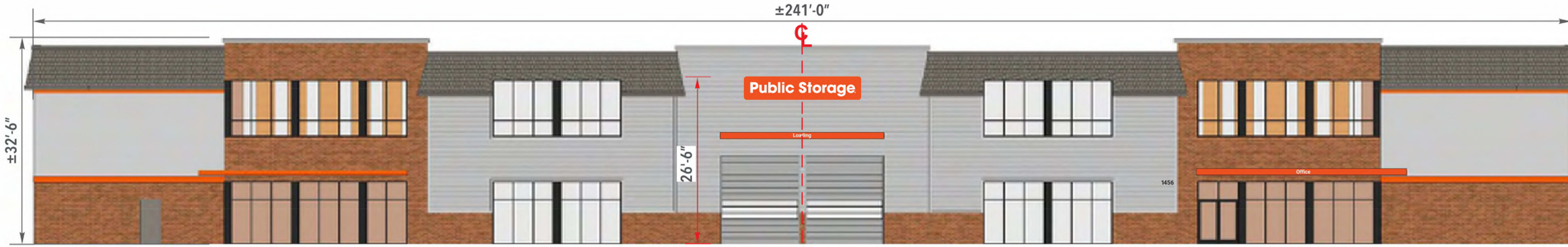


1456 NY-9D
Wappingers Falls, NY 12590

YOUR PARTNER IN BUILDING AN **OUTSTANDING** IMAGE



PROPOSED CONDITIONS



NORTH ELEVATION

SCALE: 1" = 20'-0"

EXISTING SQ. FT.: N/A

ALLOWED SQ. FT.: T.B.D.

PROPOSED SQ. FT.: 68

SPECIAL NOTES

CITY CODE & ALLOWANCES

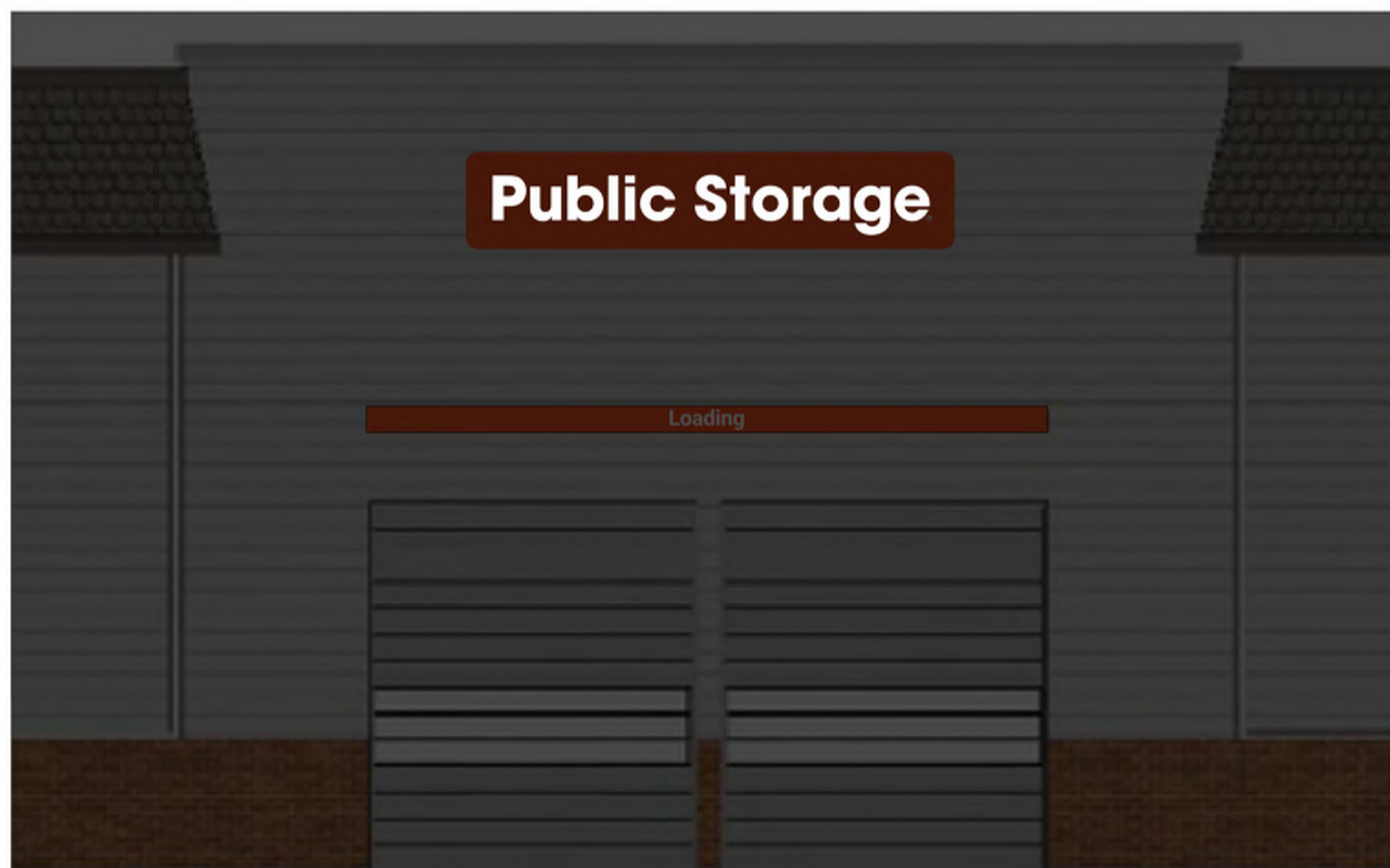
SIGNAGE ZONING COMPLIANCE

SECTION - 150-43: SIGNS (G.2.a): "Buildings that are more than 100 feet in length on their longest side shall be allowed a combined aggregate sign area of 40 square feet plus an additional one square foot of sign area per 5 linear feet of building length greater than 100 feet."

CALCULATION:

242.3 FT (Facade length) - 100FT = 142.3 FT
 142.3 FT / 5 FT = 28 SF Additional Area

ALLOWABLE SIGN AREA: 40 SF + 28 SF = 68 SF
PROPOSED SIGN AREA: 68 SF



SIMULATED NIGHT VIEW

SCALE: N.T.S.

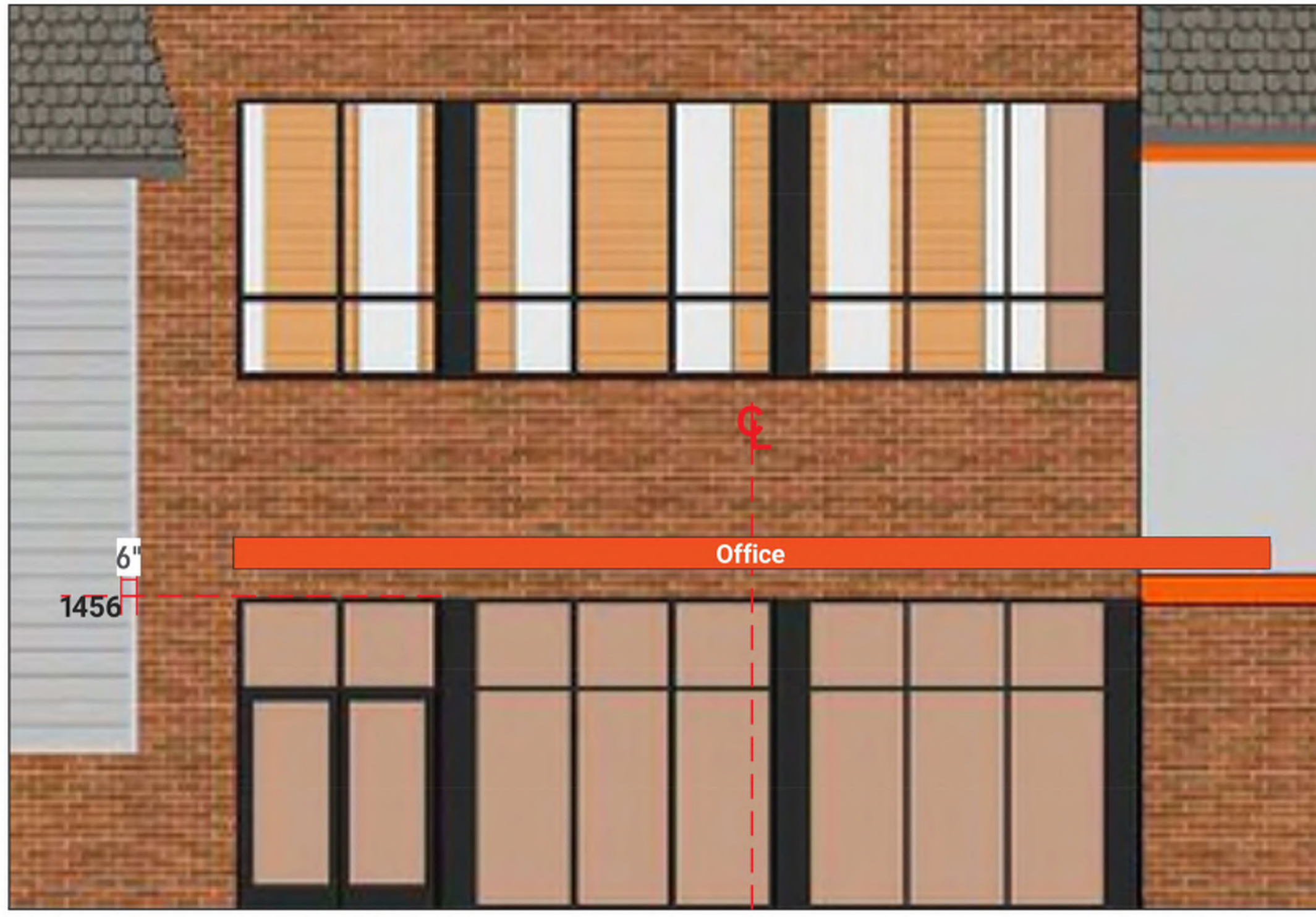


1 ILLUMINATED CHANNEL LETTERS - BACKER PANEL
 SCALE: 3/16" = 1'-0"

It is the intent and purpose of this color rendering to provide a basic color representation of your sign finish and color. However, digital media and printed colors will vary from actual paint finish and color. Existing painted surfaces will have a perceptible difference in shade and sheen from your sign finish. Providing a sample of the paint you wish to match or a Matthews paint color formula will minimize the differences.

<p>image national signs ...bringing your image to light!</p> <p>16265 Star Rd., Nampa, ID 83687 - toll free: 800.592.8058 - tele: 208.345.4020 imagenational.com</p>	<p>NAMPA PLANT - UL #433195-001</p> <p><small>U.S. & P.R. - All signs conform to UL-48/2161 (labeled accordingly) & must comply with UL-41.1 install procedures. Canada - all signs must be CAS compliant. This sign(s) is intended to be installed in accordance with requirements of article 600 of the National Electrical Code and/or applicable local codes. This includes proper grounding and bonding of the sign.</small></p>	<p>Client: PUBLIC STORAGE</p>	<p>Home Details Elevation</p>	<p>File: PBS-WAPPINGERS FALLS, NY-121923</p>	<p>Page No.</p>	
		<p>Site: 1456 NY-9D Wappingers Falls, NY 12590</p>	<p>Date: 12/19/23</p>	<p>Designer: AF Engineer: XX</p>		<p>3 of 7</p>
		<p>Account Manager: WG</p>				

PROPOSED CONDITIONS



NORTH ELEVATION

SCALE: 1/8" = 1'-0"

SPECIAL NOTES

CITY CODE & ALLOWANCES

SIGNAGE ZONING COMPLIANCE

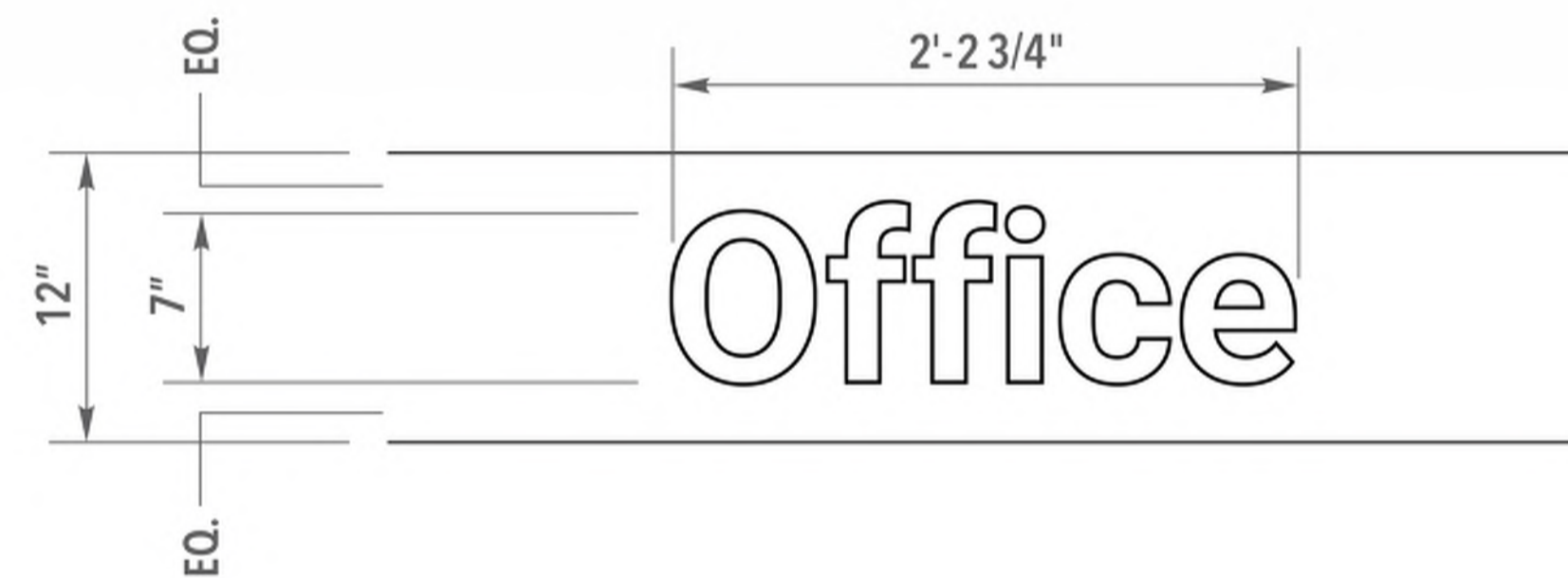
SECTION - 150-43: SIGNS (G.2.c): "Signs for internal direction shall be permitted, provided that the individual signs are no more than 2 square feet on each of two sides and are limited to generic text such as "entrance," "exit," "office," and "parking" or other reasonably necessary wording to ensure the efficient circulation of vehicles and safe pedestrian passage."

CALCULATION:

7" Height x 2'-2 3/4" Length = 1.30 SF

ALLOWABLE SIGN AREA: 2 SF PER SIGN

PROPOSED SIGN AREA: 1.30 SF (OK)



4 FCO LETTERS - CANOPY MOUNTED

SCALE: 3/4" = 1'-0"



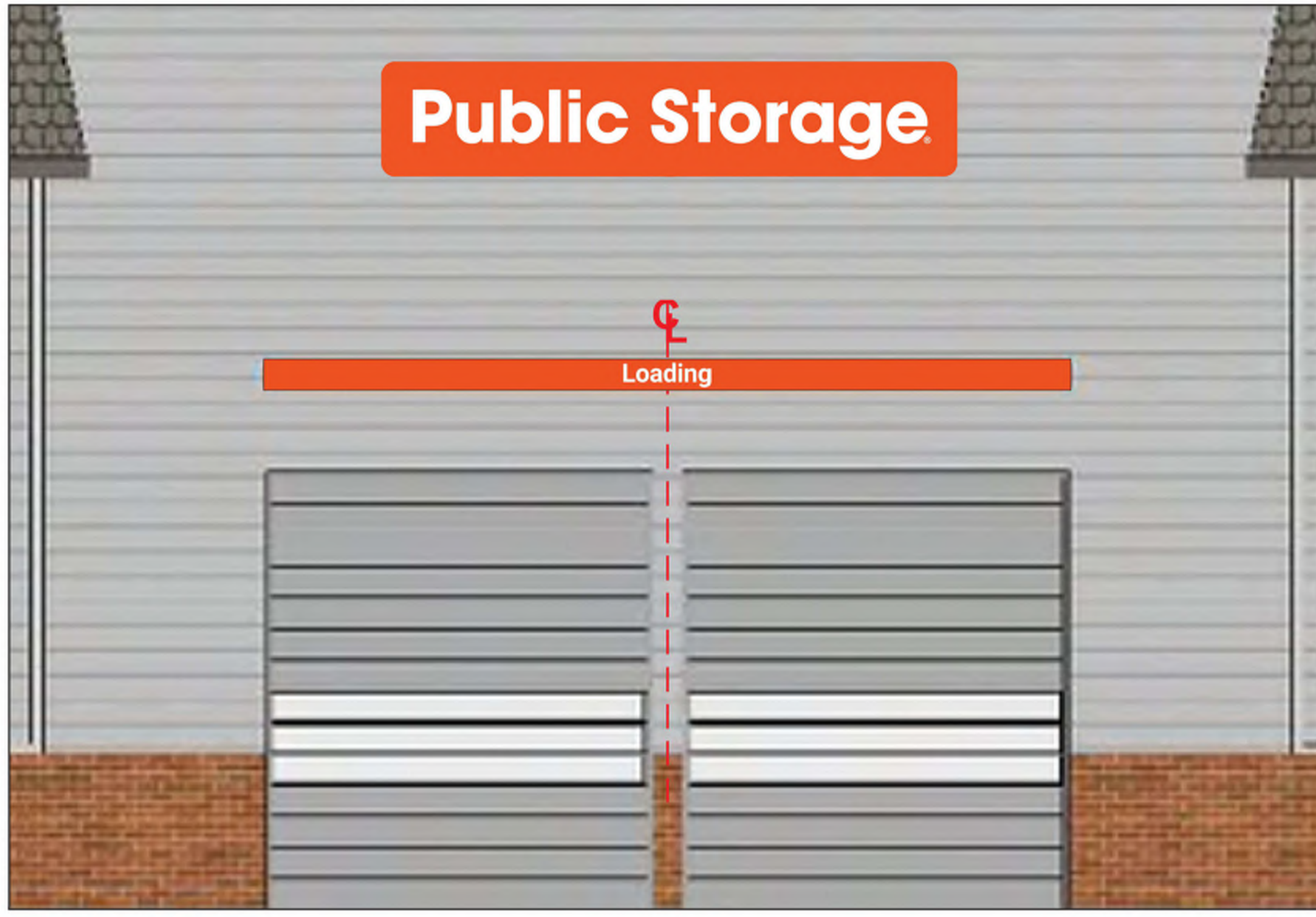
5 FCO ADDRESS NUMBERS

SCALE: 3/4" = 1'-0"

It is the intent and purpose of this color rendering to provide a basic color representation of your sign finish and color. However, digital media and printed colors will vary from actual paint finish and color. Existing painted surfaces will have a perceptible difference in shade and sheen from your sign finish. Providing a sample of the paint you wish to match or a Matthews paint color formula will minimize the differences.

<p>...bringing your image to light!</p> <p>16265 Star Rd., Nampa, ID 83687 - toll free: 800.592.8058 - tele: 208.345.4020</p> <p>imagenational.com</p>	<p>NAMPA PLANT - UL #433195-001</p> <p><small>U.S. & P.R. - All signs conform to UL-48/2161 (labeled accordingly) & must comply with UL-41.1 install procedures. Canada - all signs must be CAS compliant. This sign(s) is intended to be installed in accordance with requirements of article 600 of the National Electrical Code and/or applicable local codes. This includes proper grounding and bonding of the sign.</small></p>	<p>Client: PUBLIC STORAGE</p>	<p>Home Details Elevation</p>	<p>File: PBS-WAPPINGERS FALLS, NY-121923</p>	<p>Page No.</p>
		<p>Site: 1456 NY-9D Wappingers Falls, NY 12590</p>	<p>Date: 12/19/23</p>		<p>6 of 7</p>
		<p>Account Manager: WG</p>	<p>Designer: AF Engineer: XX</p>		

PROPOSED CONDITIONS



NORTH ELEVATION

SCALE: 1/8" = 1'-0"

SPECIAL NOTES

CITY CODE & ALLOWANCES

SIGNAGE ZONING COMPLIANCE

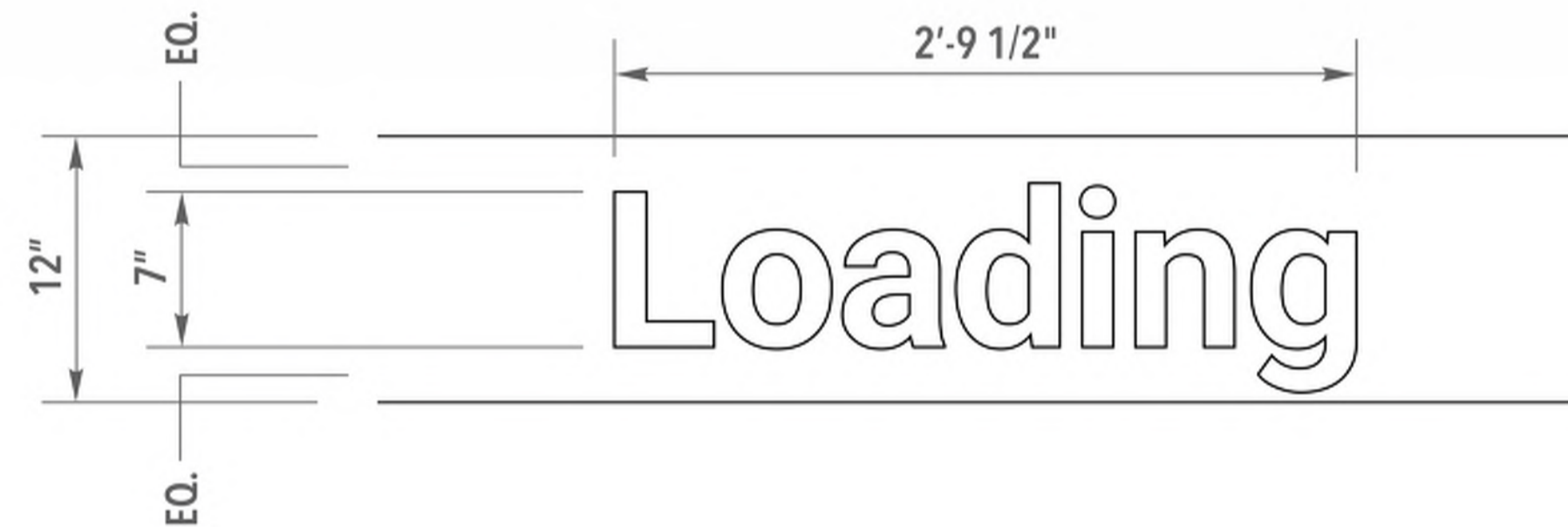
SECTION - 150-43: SIGNS (G.2.c): "Signs for internal direction shall be permitted, provided that the individual signs are no more than 2 square feet on each of two sides and are limited to generic text such as "entrance," "exit," "office," and "parking" or other reasonably necessary wording to ensure the efficient circulation of vehicles and safe pedestrian passage."

CALCULATION:

7" Height x 2'-9 1/2" Length = 1.63 SF

ALLOWABLE SIGN AREA: 2 SF PER SIGN

PROPOSED SIGN AREA: 1.63 SF (OK)



6

FCO LETTERS - CANOPY MOUNTED

SCALE: 3/4" = 1'-0"

It is the intent and purpose of this color rendering to provide a basic color representation of your sign finish and color. However, digital media and printed colors will vary from actual paint finish and color. Existing painted surfaces will have a perceptible difference in shade and sheen from your sign finish. Providing a sample of the paint you wish to match or a Matthews paint color formula will minimize the differences.

<p>...bringing your image to light!</p> <p>16265 Star Rd., Nampa, ID 83687 - toll free: 800.592.8058 - tele: 208.345.4020</p> <p>imagenational.com</p>	<p>NAMPA PLANT - UL #433195-001</p> <p><small>U.S. & P.R. - All signs conform to UL-48/2161 (labeled accordingly) & must comply with UL-41.1 install procedures. Canada - all signs must be CAS compliant. This sign(s) is intended to be installed in accordance with requirements of article 600 of the National Electrical Code and/or applicable local codes. This includes proper grounding and bonding of the sign.</small></p>	<p>Client: PUBLIC STORAGE</p>	<p>Home</p>	<p>Details</p>	<p>Elevation</p>	<p>File: PBS-WAPPINGERS FALLS, NY-121923</p>	<p>Page No.</p>
		<p>Site: 1456 NY-9D Wappingers Falls, NY 12590</p>	<p>Date: 12/19/23</p>	<p>Designer: AF</p>	<p>Engineer: XX</p>		<p>7 of 7</p>
<p>Account Manager: WG</p>							

PROPOSED CONDITIONS



NORTH ELEVATION

SCALE: 1/8" = 1'-0"

SIGNAGE ZONING COMPLIANCE

SECTION - 150-43: SIGNS (H.2.f): "Window signs. Permanent window signs must be painted on or attached directly and permanently to the window. No more than 25% of the glass may be covered by the lettering."

CALCULATION:

Sign Area = 16 1/2" Width x 24 1/4" Height = 2.87 SF
 Window Area = 2' 6" Width x 6' 6" = 16.25 SF

ALLOWABLE SIGN AREA: 25% of Glass = 16.25 x 25% = 4.06 SF
PROPOSED SIGN AREA: 2.87 SF (OK)

FABRICATION SPECIFICATIONS

1	eRENTAL ID	MATERIAL	VINYL SEE COLOR KEY (V1)
		APPLICATION	FIRST SURFACE
2	NO SMOKING	MATERIAL	VINYL SEE COLOR KEY (V2)
		APPLICATION	FIRST SURFACE
3	HANDICAP	MATERIAL	VINYL SEE COLOR KEY (V3)
		APPLICATION	FIRST SURFACE

GENERAL NOTES

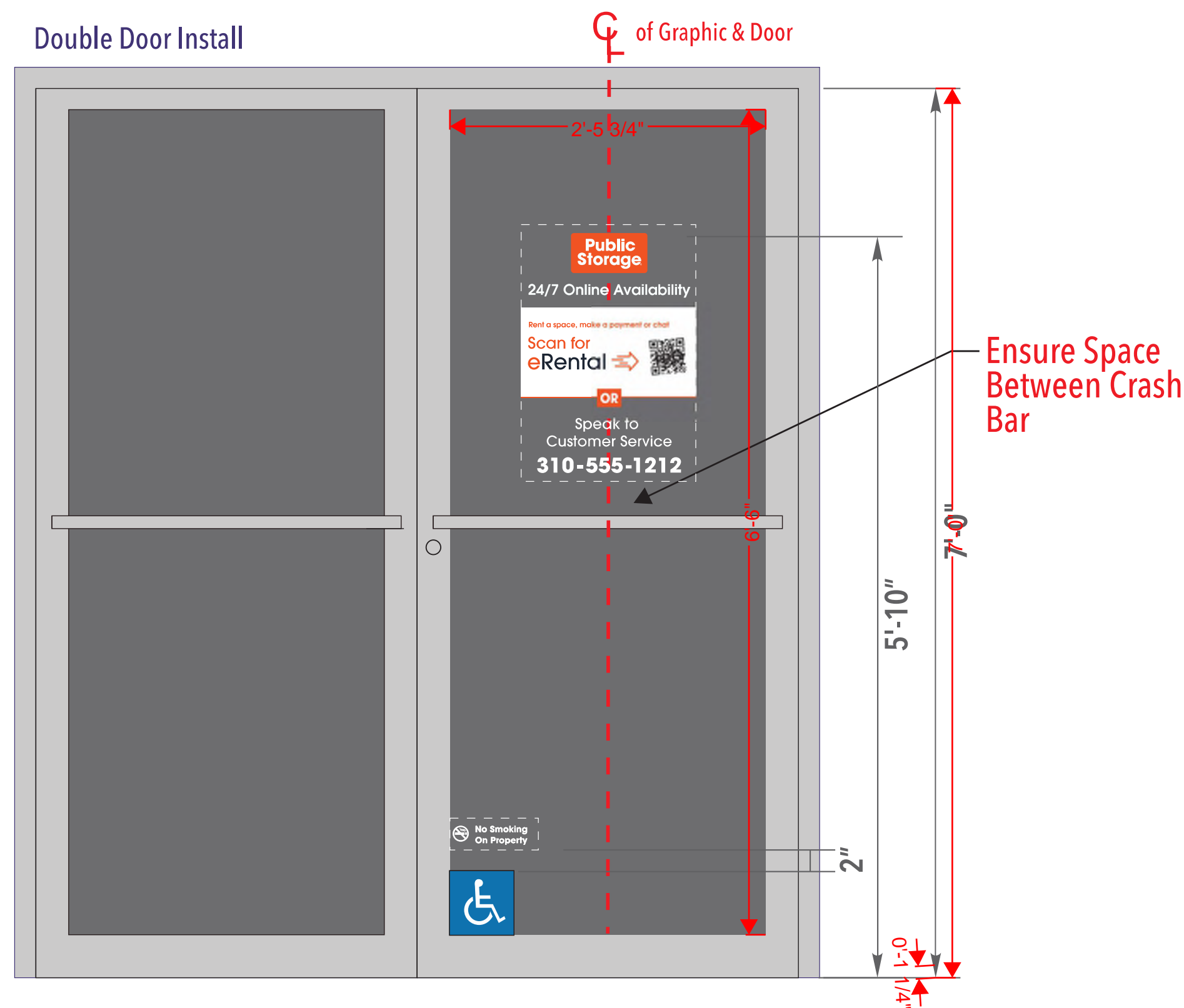
REMOVE ANY EXISTING VINYL ON DOOR

COLOR KEY

V1	VINYL	DIGITALLY PRINTED GRAPHICS ON 3M IJ8150 OPTICAL CLEAR VINYL 3M 8914 OVERLAMINATE REQUIRED ORANGE TO MATCH - 3M 3730-3109 ENVISION ORANGE VINYL
V2	VINYL	DIGITALLY PRINTED GRAPHICS ON 3M IJ8150 OPTICAL CLEAR VINYL 3M 8914 OVERLAMINATE REQUIRED
V3	VINYL	DIGITALLY PRINTED GRAPHICS TO MATCH ADA BLUE

NOTE: THE COLORS DEPICTED ON THIS RENDERING REPRESENT COLOR INTENT ONLY AND MAY NOT MATCH ACTUAL COLORS ON FINISHED PRODUCT. PLEASE REFER TO COLOR CALL-OUTS AND SPECIFIED VENDOR SAMPLES FOR APPROVED COLOR SPECIFICATIONS.

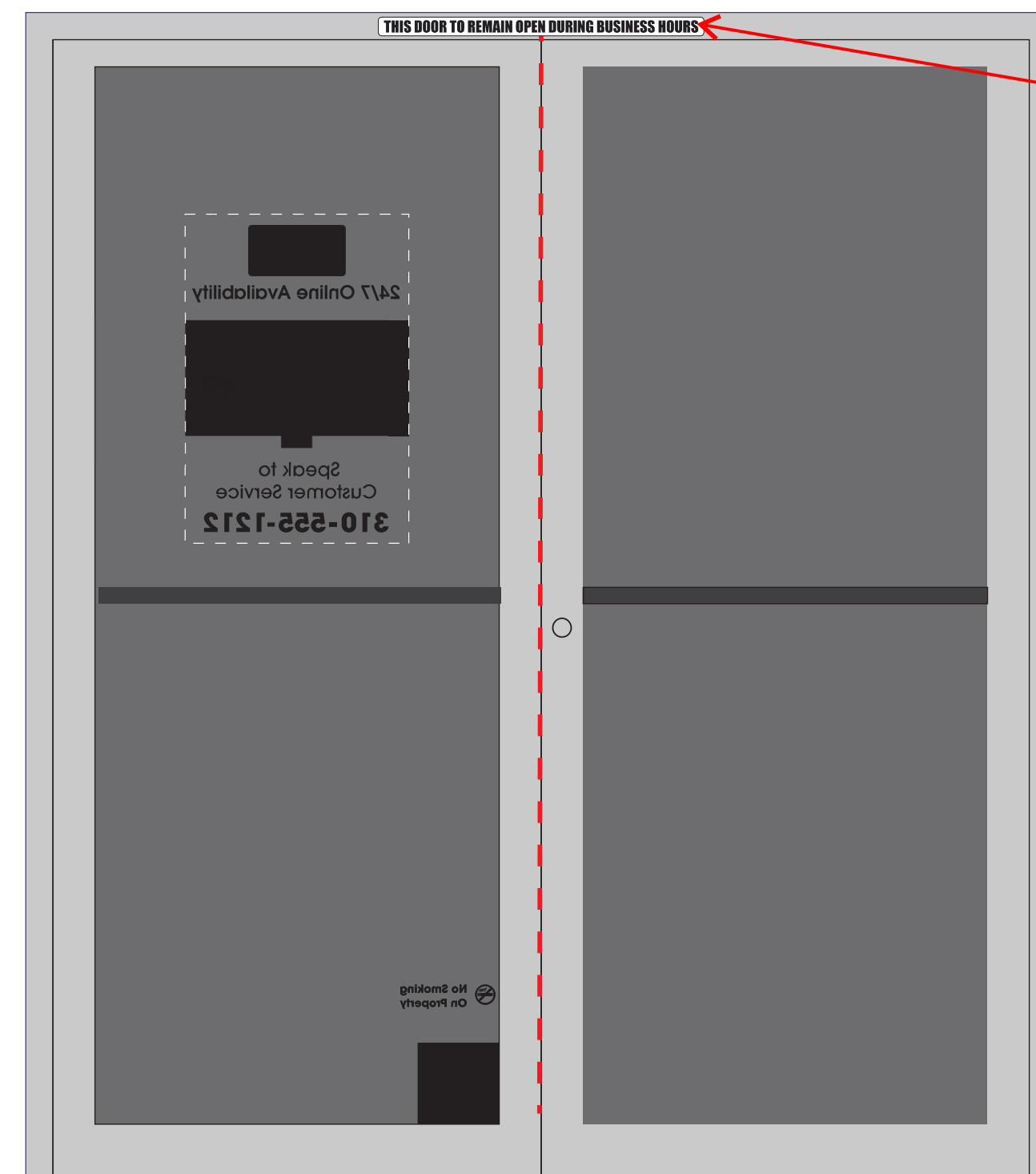
Double Door Install



ELEVATION

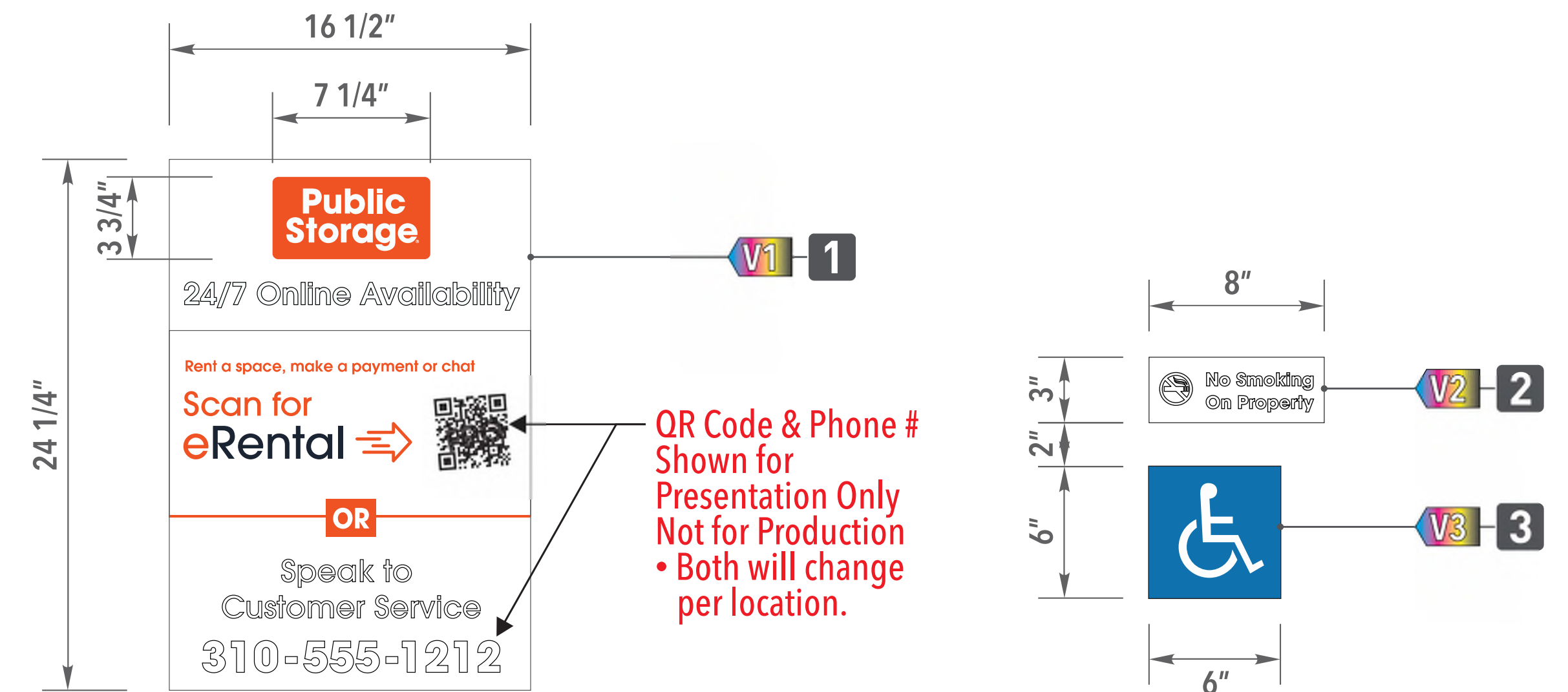
SCALE: 1/2" = 1'-0"

C of Graphic & Frame



REAR ELEVATION

SCALE: 1/2" = 1'-0"



7 DOOR VINYL

SCALE: 1" = 1'-0"

It is the intent and purpose of this color rendering to provide a basic color representation of your sign finish and color. However, digital media and printed colors will vary from actual paint finish and color. Existing painted surfaces will have a perceptible difference in shade and sheen from your sign finish. Providing a sample of the paint you wish to match or a Matthews paint color formula will minimize the differences.



16265 Star Rd., Nampa, ID 83687 - toll free: 800.592.8058 - tele: 208.345.4020
 imagenational.com

UL UNDERWRITERS LABORATORIES **NAMPA PLANT - UL #433195-001**
 U.S. & P.R. - All signs conform to UL-48/2161 (labeled accordingly) & must comply with UL-41.1.1 install procedures. Canada - all signs must be CAS compliant. This sign(s) is intended to be installed in accordance with requirements of article 600 of the National Electrical Code and/or applicable local codes. This includes proper grounding and bonding of the sign.

Client: PUBLIC STORAGE
Site: 1456 NY-9D Wappingers Falls, NY 12590

Home	Details	Elevation
Date: 12/19/23		
Designer: AF	Engineer: XX	
Account Manager: WG		

File: PBS-WAPPINGERS FALLS, NY-121923

Page No.



V

PROPOSED CONDITIONS



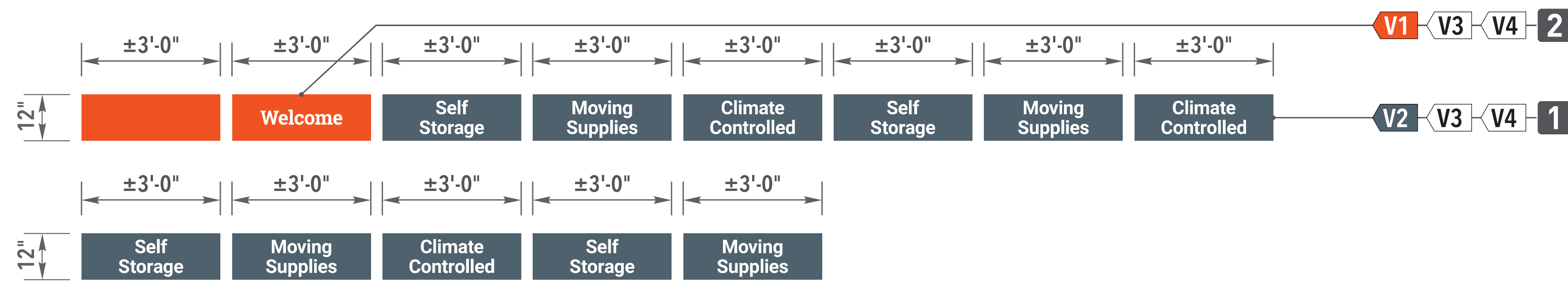
NORTH ELEVATION

SCALE: 1/8" = 1'-0"



WEST ELEVATION

SCALE: 1/8" = 1'-0"



8 WINDOW VINYL
SCALE: 1/4" = 1'-0"



FABRICATION SPECIFICATIONS

1	PROMOTIONAL ID	MATERIAL	VINYL SEE COLOR KEY (V2, V3, V4)
		APPLICATION	FIRST SURFACE
2	WELCOME	MATERIAL	VINYL SEE COLOR KEY (V1, V3, V4)
		APPLICATION	FIRST SURFACE

GENERAL NOTES

WINDOW VINYL DECALS WILL BE OVERSIZED IN LENGTH TRIM ENDS TO FIT ON SITE. ALWAYS CENTER COPY IN OPENING.

COLOR KEY

V1	VINYL	3M ENVISION 3730-3109 PS ORANGE
V2	VINYL	3M 7725-41 GREY
V3	VINYL	3M 180C-10 OPAQUE WHITE
V4	VINYL	3M 3660M UV LAMINATE

NOTE: THE COLORS DEPICTED ON THIS RENDERING REPRESENT COLOR INTENT ONLY AND MAY NOT MATCH ACTUAL COLORS ON FINISHED PRODUCT. PLEASE REFER TO COLOR CALL-OUTS AND SPECIFIED VENDOR SAMPLES FOR APPROVED COLOR SPECIFICATIONS.

SIGNAGE ZONING COMPLIANCE

SECTION - 150-43: SIGNS (H.2.f): "Window signs. Permanent window signs must be painted on or attached directly and permanently to the window. No more than 25% of the glass may be covered by the lettering."

CALCULATION:

Sign Area = 3' - 0" Width x 12" Height = 3 SF x (13 Panels) = 39SF
Window Area = 3' - 0" Width x 9' - 8" = 29SF x (13 Panels) = 377 SF

ALLOWABLE SIGN AREA: 25% of Glass = 377 x 25% = 94.25 SF
PROPOSED SIGN AREA: 39 SF (OK)

It is the intent and purpose of this color rendering to provide a basic color representation of your sign finish and color. However, digital media and printed colors will vary from actual paint finish and color. Existing painted surfaces will have a perceptible difference in shade and sheen from your sign finish. Providing a sample of the paint you wish to match or a Matthews paint color formula will minimize the differences.



16265 Star Rd., Nampa, ID 83687 - toll free: 800.592.8058 - tele: 208.345.4020
imagenational.com



U.S. & P.R. - All signs conform to UL-48/2161 (labeled accordingly) & must comply with UL-41.1 install procedures. Canada - all signs must be CAS compliant. This sign(s) is intended to be installed in accordance with requirements of article 600 of the National Electrical Code and/or applicable local codes. This includes proper grounding and bonding of the sign.

Client: PUBLIC STORAGE	Date: 12/19/23
Site: 1456 NY-9D Wappingers Falls, NY 12590	Designer: AF Engineer: XX
	Account Manager: WG

Home	Details	Elevation
------	---------	-----------

File: PBS-WAPPINGERS FALLS, NY-121923	Page No.
	V

SIGNAGE ZONING COMPLIANCE

SECTION - 150-43: SIGNS (G.2.b): "Not more than one monument sign of a maximum height of six feet, including the base, shall be permitted per lot. The sign area of such monument sign shall be not larger than 32 square feet or 16 square feet per side for a single establishment and no larger than 40 square feet or 20 square feet per side for two or more establishments sharing a sign. No single establishment shall occupy more than 32 square feet or 16 square feet per side of sign area. The sign shall be a minimum of 15 feet from the edge of the road."

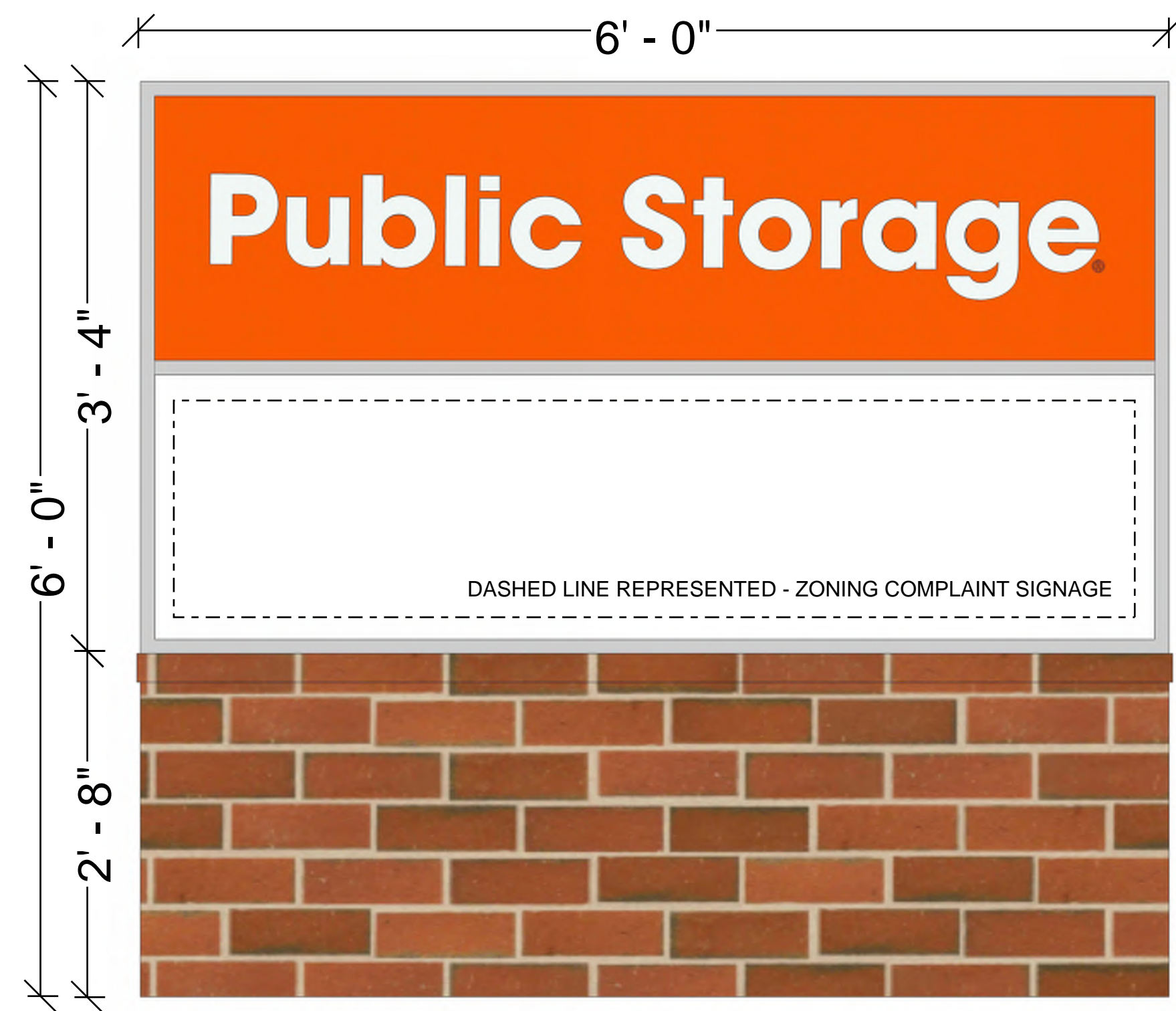
CALCULATION:

Sign Area = 6' - 0" Width x 3' - 4" Height = 20 SF (Per Side)
 Height = 2' - 8" Base + 3' - 4" Sign Height = 6FT Max.

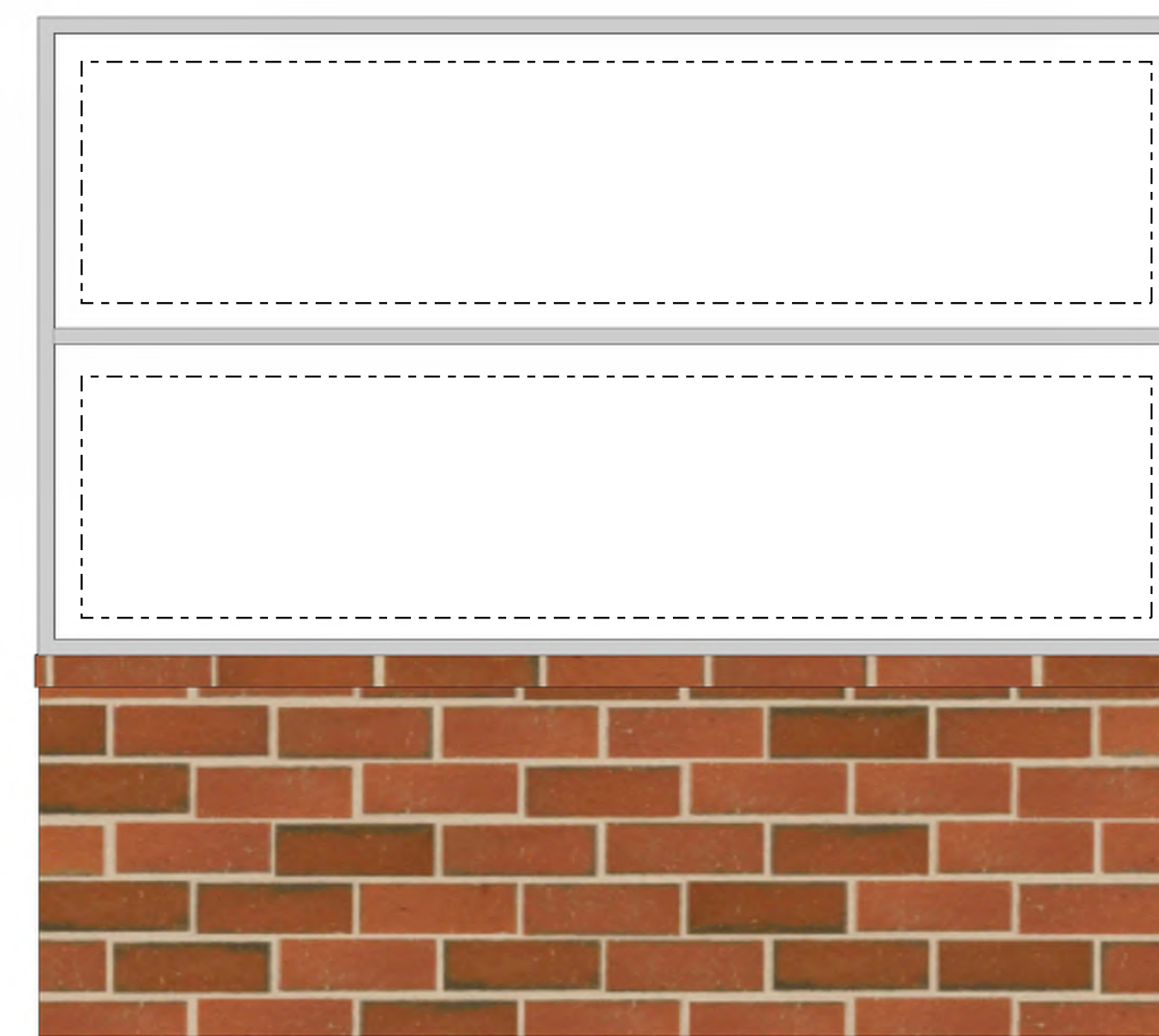
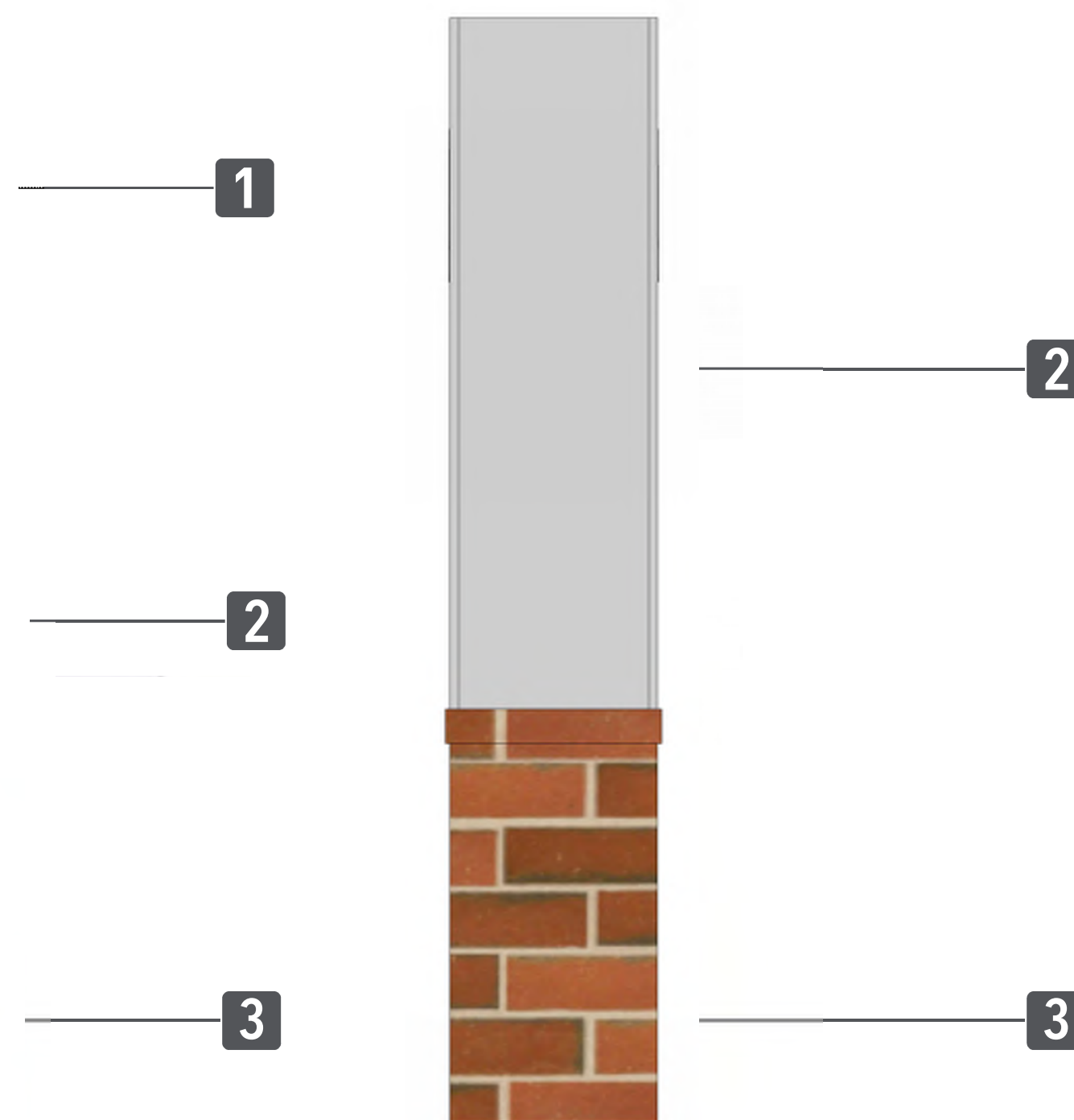
ALLOWABLE SIGN AREA: 20SF (Per Side)
PROPOSED SIGN AREA: 20 SF (Per Side) (OK)
MONUMENT HEIGHT: 6FT
PROPOSED MONUMENT HEIGHT: 6FT (OK)

FABRICATION SPECIFICATIONS

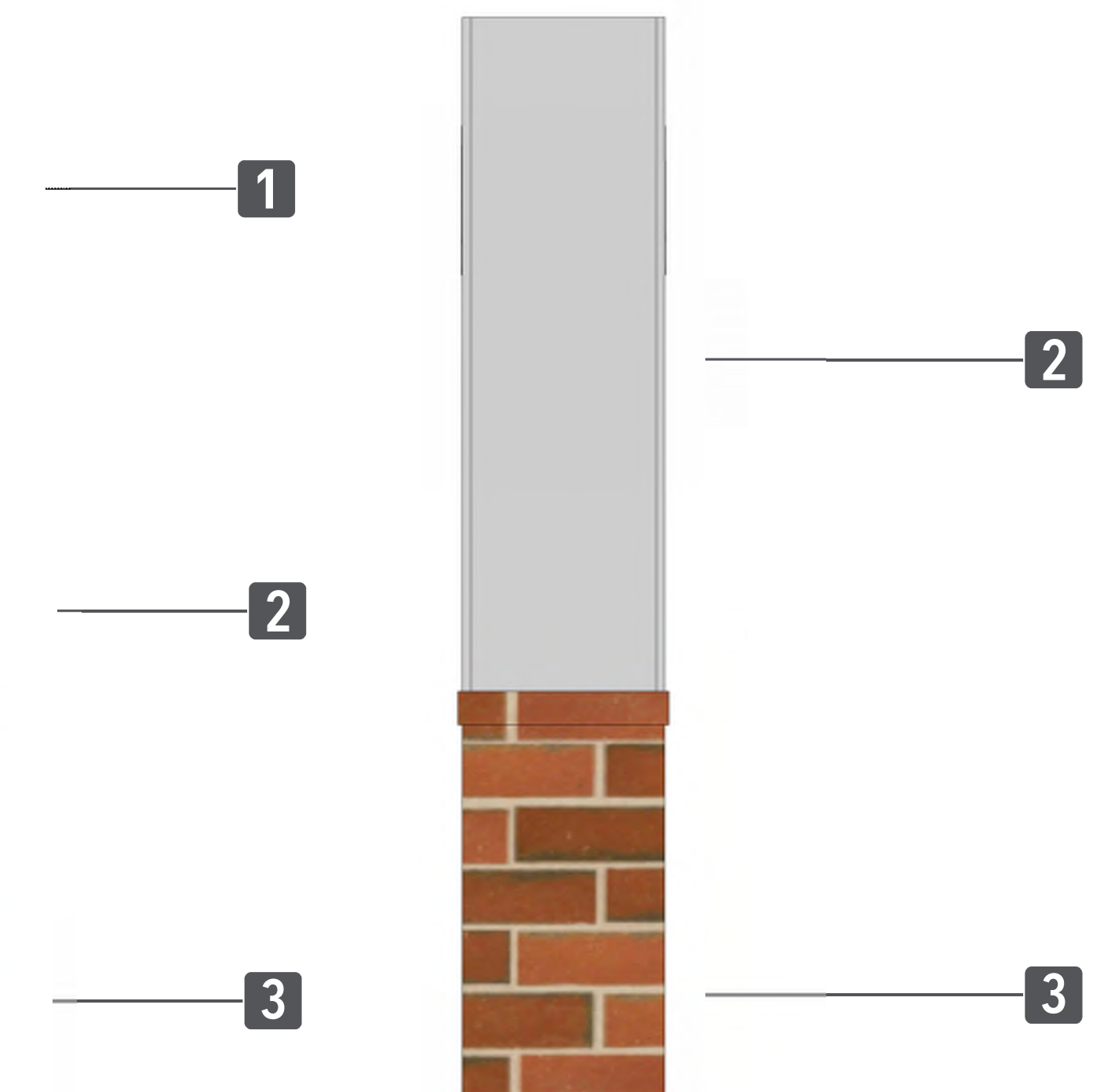
1	FCO LETTERS	MATERIAL	VINYL
		APPLICATION	FIRST SURFACE
2	SIGN FACE	MATERIAL	ALUMINUM
		APPLICATION	FIRST SURFACE
3	BASE	MATERIAL	BRICK
		APPLICATION	FIRST SURFACE



1 MONUMENT SIGN - 1
 SCALE: 3/16" = 1'-0"



2 MONUMENT SIGN - 2
 SCALE: 3/16" = 1'-0"



It is the intent and purpose of this color rendering to provide a basic color representation of your sign finish and color. However, digital media and printed colors will vary from actual paint finish and color. Existing painted surfaces will have a perceptible difference in shade and sheen from your sign finish. Providing a sample of the paint you wish to match or a Matthews paint color formula will minimize the differences.

image national signs **in**
...bringing your image to light!
 16265 Star Rd., Nampa, ID 83687 - toll free: 800.592.8058 - tele: 208.345.4020
 imagenational.com

UL UNDERWRITERS LABORATORIES ELECTRICAL SIGNS
 NAMPA PLANT - UL #433195-001
 U.S. & P.R. - All signs conform to UL-48/2161 (labeled accordingly) & must comply with UL-41.1.1 install procedures. Canada - all signs must be CAS compliant. This sign(s) is intended to be installed in accordance with requirements of article 600 of the National Electrical Code and/or applicable local codes. This includes proper grounding and bonding of the sign.

Client: PUBLIC STORAGE
Site: 1456 NY-9D
 Wappingers Falls, NY 12590

Home **Details** **Elevation**
Date: 12/19/23
Designer: AF **Engineer:** XX
Account Manager: WG

File: PBS-WAPPINGERS FALLS, NY-121923

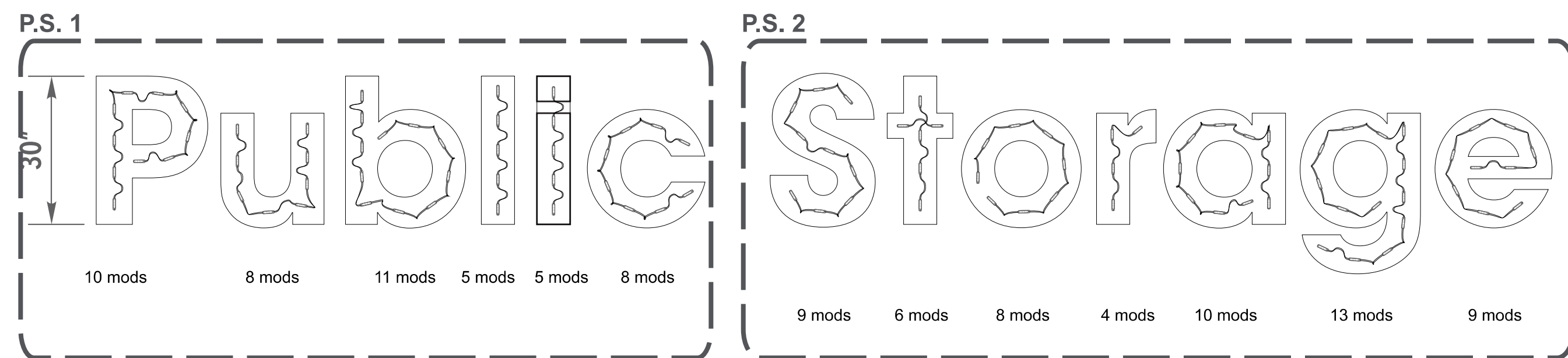
Page No.
D



PART # PBSLB28LPSWH

1 ILLUMINATED CHANNEL LETTERS - BACKER PANEL
SCALE: 3/16" = 1'-0"

GE GEMX2471-W1S TETRA MAX 24V WHITE SMALL (106 MODS)
GE PS24-100U-NA POWER SUPPLY (2 REQ'D)



LED LAYOUT

SCALE: 1/4" = 1'-0"

FABRICATION SPECIFICATIONS

1	PAN CHANNEL	FACE COLOR	.150 WHITE POLYCARBONATE
		TRIM CAP COLOR	BLACK
		TRIM CAP SIZE	1"
		RETURN	.040 OR .050 ALUMINUM
		RETURN COLOR	PRE-PAINTED BLACK
2	BACKER PANEL	RETURN DEPTH	
		BACKS	3MM ACM
		LED	GE WHITE LED
		FRAME	ALUMINUM ANGLE
		RETURNS	.090 ALUMINUM
3	TRADEMARK	FACE	.125 ALUMINUM
		FRAME	ALUMINUM ANGLE
		COLOR	PER COLOR KEY
		COLOR	PER COLOR KEY

GENERAL NOTES

- N** • DISCONNECT SWITCH ON LEFT SIDE OF BACKER PANEL
PAIN ANY EXISTING J-BOX OR CONDUIT TO MATCH WALL SURFACE.
ANY PENETRATIONS INSIDE STORAGE UNITS ARE REQUIRED TO BE INSTALLED USING SEALTIGHT AND INSTALLATION ABOVE THE ROOFLINE MUST INSTALL USING RACEWAYS. EITHER TO BE SUPPLIED BY INSTALLER.

COLOR KEY

P1	PAINT	PPG PS 101 ORANGE
V1	VINYL	3M WHITE

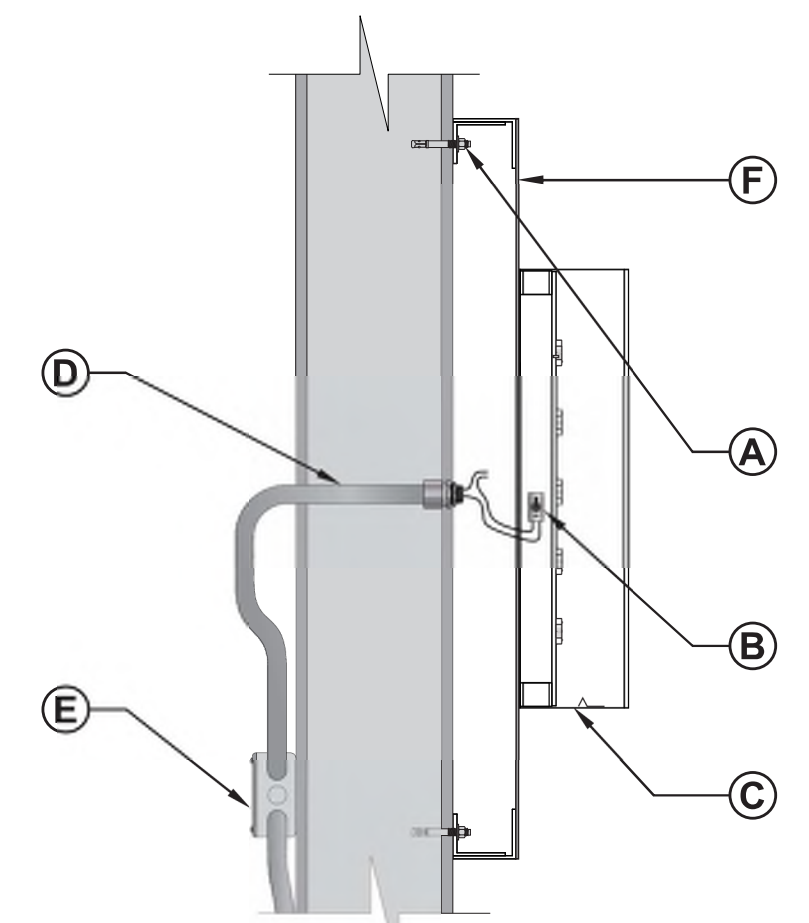
NOTE: THE COLORS DEPICTED ON THIS RENDERING REPRESENT COLOR INTENT ONLY AND MAY NOT MATCH ACTUAL COLORS ON FINISHED PRODUCT. PLEASE REFER TO COLOR CALL-OUTS AND SPECIFIED VENDOR SAMPLES FOR APPROVED COLOR SPECIFICATIONS.

SHIPPING LIST

MATERIAL	
1/2" FLEX CONDUIT	
1/2" FLEX CONNECTORS	
TOUCH-UP PAINT	
POWER SUPPLY	
TRANSFORMER CAN	
DISCONNECT SWITCH	
ALL THREAD - INSTALL HARDWARE	
INSTALL PATTERN	
ELECTRICAL PASS-THRU	

ELECTRICAL REQUIREMENTS

VOLTS	120	AMP	2.2	CIRCUIT	1
--------------	------------	------------	------------	----------------	----------



TYPICAL SECTION DETAIL
SCALE: 3/4" = 1'-0"

INSTALL

- A. Non-Corrosive Securement Using Appropriate Mounting Hardware Painted to Match Background**
- B. Disconnect Switch at Left End of Raceway**
- C. 1/4"Ø Drain Holes Required in Letter Returns & Retainers w/ Baffles as required.**
- D. 1/2" (MFG) Plastic Pass-Through**
- E. 20 amp 120 V. Circuits Required (Brought to within 6' of sign BY OTHERS)**
- F. Backer Panel**

APPROVED FASTENER SCHEDULE

	3/8" - 1/2" LAG SCREW	FOR USE WITH WOOD OR EIFS WALL SYSTEMS. 1 1/2" MIN PENETRATION (EXCLUDING TIP)
	1/4" - 3/8" THREADED ROD	FOR USE WITH WOOD, CONCRETE BLOCK OR EIFS WALL SYSTEMS
	3/8" RED HEAD L.D.T. (LARGE DIAMETER TAPCON)	FOR USE WITH CONCRETE BLOCK, BRICK OR CONCRETE. EMBED A MIN. OF 2 1/2".
	3/8" DIA. HILTI HIT ROD WITH HY150 MAX ADHESIVE	FOR USE WITH CONCRETE. EMBED A MIN. OF 2"
	3/8" DIA. HILTI HIT ROD WITH HY20 ADHESIVE	FOR USE WITH MASONRY AND BRICK. EMBED A MIN. OF 3 3/8"
	3/8" DIA. HILTI HIT ROD WITH HY20 ADHESIVE	FOR USE WITH CONCRETE BLOCK. EMBED A MIN. OF 2"
	3/8" DIA. HCL SLEEVE ANCHOR	FOR USE WITH CONCRETE, MASONRY AND BRICK. EMBED A MIN. OF 3 3/8".
	3/8" DIA. LAG WITH 3/8" SHIELD & WASHER	FOR USE WITH CONCRETE, MASONRY AND BRICK - EMBED A MIN. OF 2"
	#10 (3") HEX SCREW W/ FENDER WASHER INTO PLASTIC WALL ANCHOR	USE WITH CONCRETE, MASONRY & BRICK. FOR USE WITH SMALL/LIGHTWEIGHT LETTERS & CABINETS

MANUFACTURING REVISIONS

ECO #	DESCRIPTION - INITIALS
1	
2	
3	

It is the intent and purpose of this color rendering to provide a basic color representation of your sign finish and color. However, digital media and printed colors will vary from actual paint finish and color. Existing painted surfaces will have a perceptible difference in shade and sheen from your sign finish. Providing a sample of the paint you wish to match or a Matthews paint color formula will minimize the differences.

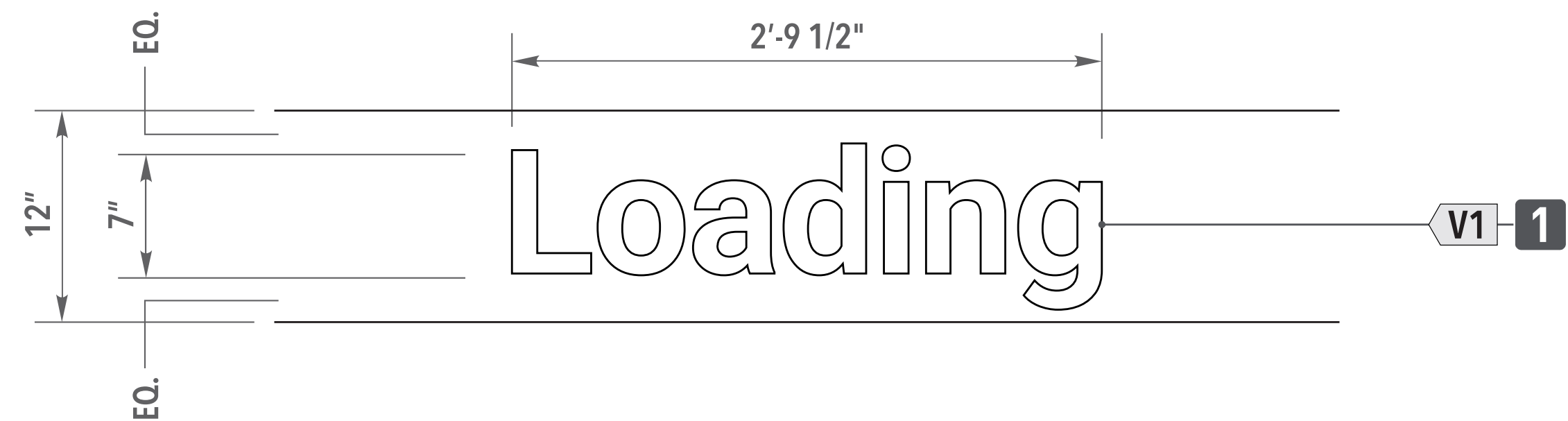
image national signs **in**
...bringing your image to light!
16265 Star Rd., Nampa, ID 83687 - toll free: 800.592.8058 - tele: 208.345.4020
imagenational.com

UL UNDERWRITERS LABORATORIES ELECTRICAL DIV
NAMPA PLANT - UL #433195-001
U.S. & P.R. - All signs conform to UL-48/2161 (labeled accordingly) & must comply with UL-41.1 install procedures. Canada - all signs must be CAS compliant. This sign(s) is intended to be installed in accordance with requirements of article 600 of the National Electrical Code and/or applicable local codes. This includes proper grounding and bonding of the sign.

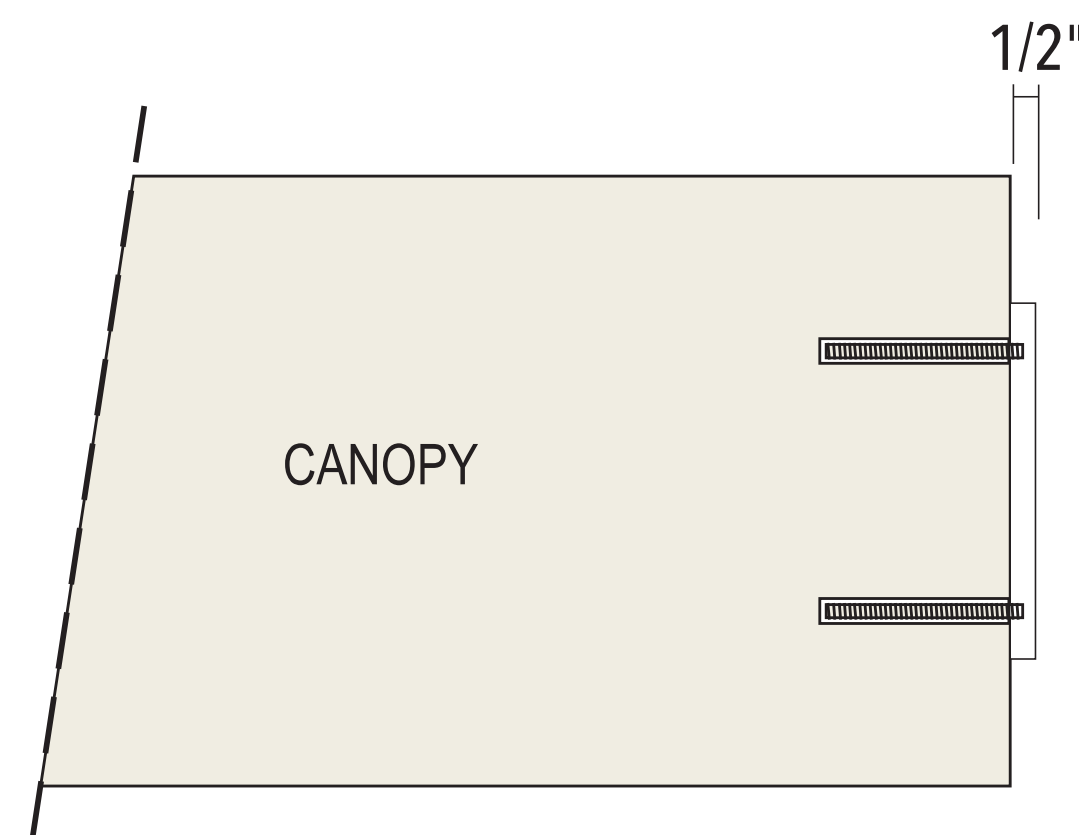
Client: PUBLIC STORAGE
Site: 1456 NY-9D Wappingers Falls, NY 12590
Date: 12/19/23
Designer: AF **Engineer:** XX
Account Manager: WG

Home **Details** **Elevation**
File: PBS-WAPPINGERS FALLS, NY-121923

Page No.
Public Storage **D**



6 FCO LETTERS - CANOPY MOUNTED
SCALE: 3/4" = 1'-0"



SIDE SECTION DETAIL
SCALE: 1 1/2" = 1'-0"

FABRICATION SPECIFICATIONS

1	FCO LETTERS	MATERIAL	1/2" WHITE ACRYLIC
		COLOR	PER COLOR KEY (V1)
		MOUNTING	1/4" x 6" STUDS

NOTES

N	
----------	--

COLOR KEY

V1	VINYL	3M IJ5100R-10 REFLECTIVE WHITE
NOTE: THE COLORS DEPICTED ON THIS RENDERING REPRESENT COLOR INTENT ONLY AND MAY NOT MATCH ACTUAL COLORS ON FINISHED PRODUCT. PLEASE REFER TO COLOR CALL-OUTS AND SPECIFIED VENDOR SAMPLES FOR APPROVED COLOR SPECIFICATIONS.		

It is the intent and purpose of this color rendering to provide a basic color representation of your sign finish and color. However, digital media and printed colors will vary from actual paint finish and color. Existing painted surfaces will have a perceptible difference in shade and sheen from your sign finish. Providing a sample of the paint you wish to match or a Matthews paint color formula will minimize the differences.

image national signs **in**
...bringing your image to light!

16265 Star Rd., Nampa, ID 83687 - toll free: 800.592.8058 - tele: 208.345.4020
imagenational.com



NAMPA PLANT -
UL #433195-001

U.S. & P.R. - All signs conform to UL-48/2161 (labeled accordingly) & must comply with UL-41.1 install procedures. Canada - all signs must be CAS compliant. This sign(s) is intended to be installed in accordance with requirements of article 600 of the National Electrical Code and/or applicable local codes. This includes proper grounding and bonding of the sign.

Client: PUBLIC STORAGE

Site: 1456 NY-9D
Wappingers Falls, NY 12590

[Home](#) [Details](#) [Elevation](#)

Date: 12/19/23

Designer: AF

Engineer: XX

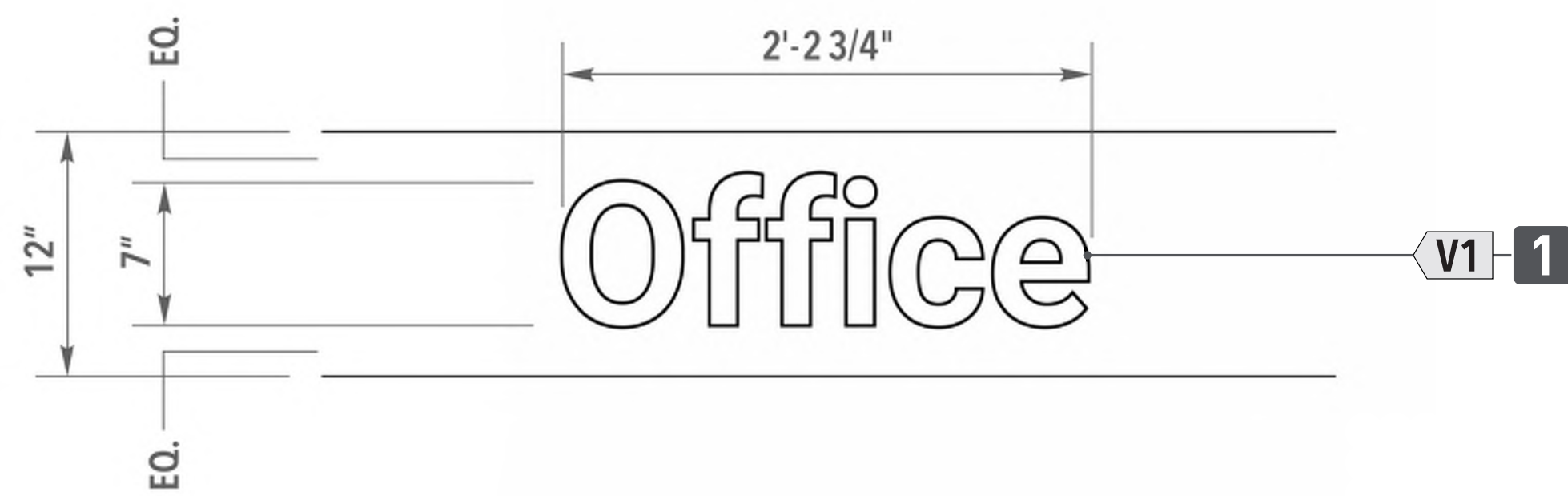
Account Manager: WG

File: PBS-WAPPINGERS FALLS, NY-121923

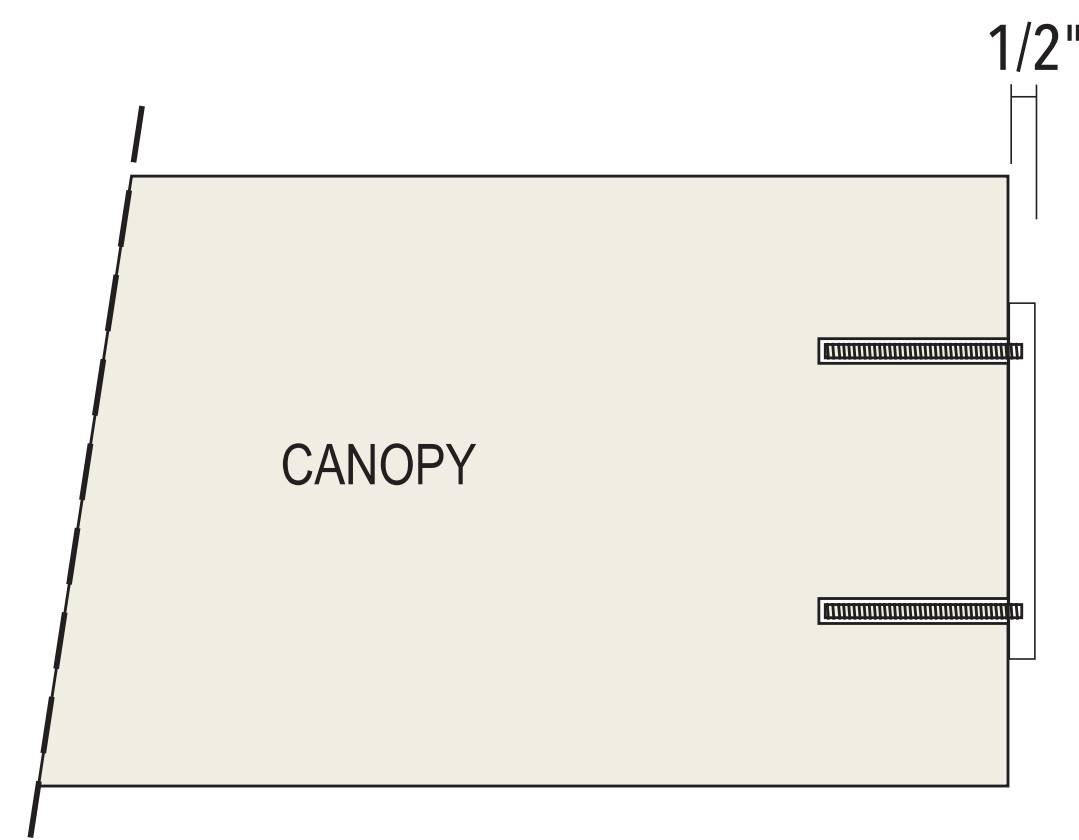
Page No.

Public Storage

D



4 FCO LETTERS - CANOPY MOUNTED
SCALE: 3/4" = 1'-0"



SIDE SECTION DETAIL
SCALE: 1 1/2" = 1'-0"

FABRICATION SPECIFICATIONS

1	FCO LETTERS	MATERIAL	1/2" WHITE ACRYLIC
		COLOR	PER COLOR KEY (V1)
		MOUNTING	1/4" x 6" STUDS
2	FCO NUMBERS	MATERIAL	1/2" CLEAR ACRYLIC
		COLOR	PER COLOR KEY (P1)
		MOUNTING	1/4" x 6" STUDS

NOTES

N

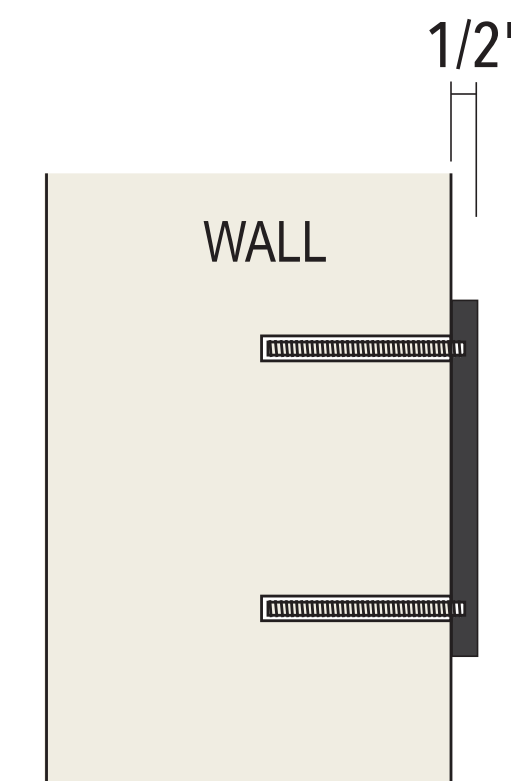
COLOR KEY

V1	VINYL	3M IJ5100R-10 REFLECTIVE WHITE
P1	PAINT	BLACK

NOTE: THE COLORS DEPICTED ON THIS RENDERING REPRESENT COLOR INTENT ONLY AND MAY NOT MATCH ACTUAL COLORS ON FINISHED PRODUCT. PLEASE REFER TO COLOR CALL-OUTS AND SPECIFIED VENDOR SAMPLES FOR APPROVED COLOR SPECIFICATIONS.



5 FCO ADDRESS NUMBERS
SCALE: 3/4" = 1'-0"



SIDE SECTION DETAIL
SCALE: 1 1/2" = 1'-0"

It is the intent and purpose of this color rendering to provide a basic color representation of your sign finish and color. However, digital media and printed colors will vary from actual paint finish and color. Existing painted surfaces will have a perceptible difference in shade and sheen from your sign finish. Providing a sample of the paint you wish to match or a Matthews paint color formula will minimize the differences.

image national signs **in**
...bringing your image to light!

16265 Star Rd., Nampa, ID 83687 - toll free: 800.592.8058 - tele: 208.345.4020
imagenational.com



NAMPA PLANT -
UL #433195-001

U.S. & P.R. - All signs conform to UL-48/2161 (labeled accordingly) & must comply with UL-41.1 install procedures. Canada - all signs must be CAS compliant. This sign(s) is intended to be installed in accordance with requirements of article 600 of the National Electrical Code and/or applicable local codes. This includes proper grounding and bonding of the sign.

Client: PUBLIC STORAGE

Site: 1456 NY-9D
Wappingers Falls, NY 12590

Home Details Elevation

Date: 12/19/23

Designer: AF

Engineer: XX

Account Manager: WG

File: PBS-WAPPINGERS FALLS, NY-121923

Page No.

Public Storage

D